

Tooth mould chart

SR Phonares® II
SR Phonares® II Typ
SR Phonares® II Lingual

High-end denture teeth
made from composite



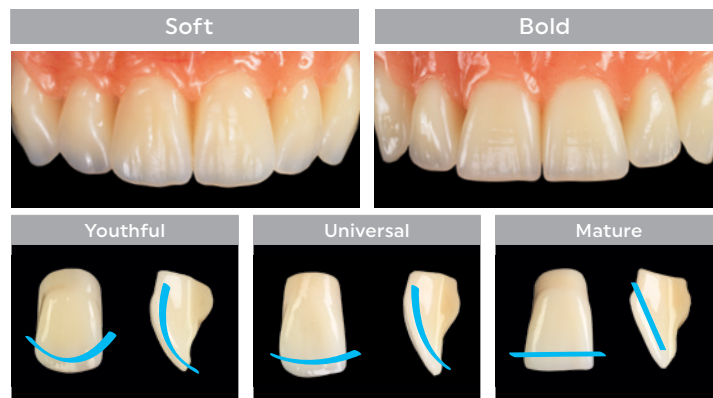
Selection criteria

Anterior teeth

Designed to match the age and characteristics of the patient

A straightforward selection procedure

The clear, concept-based arrangement of the tooth moulds ensures simple selection based on patient-specific criteria.



- Naturally shaped incisal edge
- Pronounced facial curvature

- Slightly abraded incisal edge
- Reduced facial curvature

- Heavily abraded incisal edge
- Flat facial curvature

In addition to the shade, the shape (form) and size of anterior teeth have to be matched to the individual characteristics of the patient. The SR Phonares II line of teeth offers 18 upper and 6 lower tooth moulds for the anterior region.

If possible, the anterior teeth should be selected directly on the patient according to the patient's anatomical and facial characteristics. The following methods are recommended to facilitate the selection procedure:

Chairside

FormSelector™

The SR Phonares® II FormSelector™ allows fast, easy and targeted selection of the appropriate anterior tooth mould.

- Step 1:** Determine the interalar width of the nose with the help of the Facial Meter. Select an appropriately sized tooth mould from the table.
- Step 2:** After having identified the correct size category, select the desired tooth form, soft or bold, in line with the shape of the patient's face.
- Step 3:** Select the appropriate age group of the teeth according to the incisal and facial curvature of the SR Phonares II teeth.

Labside

Model analysis

Determine the following reference points with the help of a model analysis:

a] Position of canines

Identify the first large pair of rugae; the midpoint of the labial surface of the upper canines is aligned at a distance of 9 mm.

b] Intersection point of central incisors

The labial surface of the central incisors is aligned at a distance of 7 mm to the centre of the incisive papilla.

The length of the dental arch measured across these three points can be used as a reference to select a set of anterior teeth with an appropriate width from the tooth mould chart.

Selection criteria

Posterior teeth

The SR Phonares® II product family incorporates two posterior tooth lines

SR Phonares® II Typ

With its occlusion concept, the SR Phonares II Typ is versatile for use in complete and partial dentures^[1].

Conventional occlusion



One-to-two setup



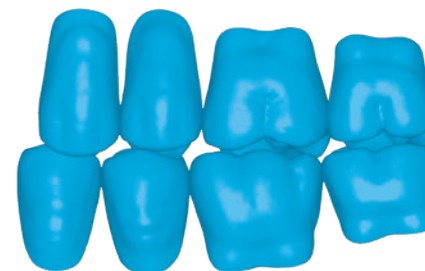
SR Phonares® II Lingual

The tooth mould of SR Phonares II Lingual takes the basic principles of a lingualized occlusion into account. With this specific design, lingualized occlusion is popular for implant-supported dentures^[1].

Lingualized occlusion

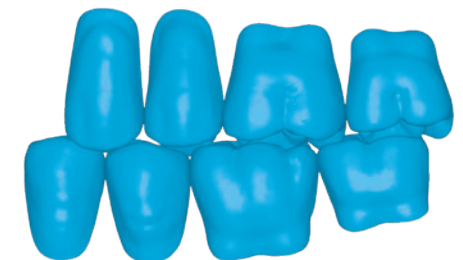


One-to-one setup



OR

One-to-two setup



SR Phonares® II

Soft



SR Phonares® II

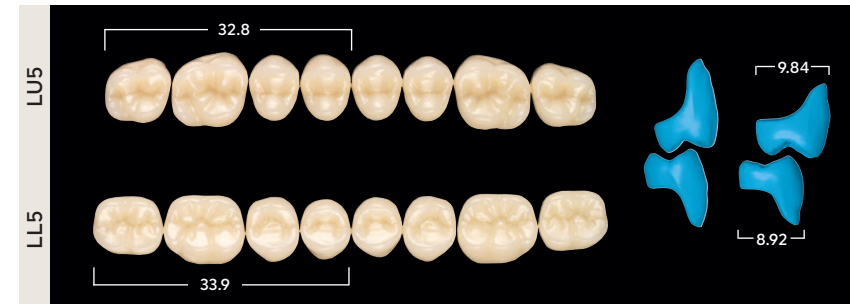
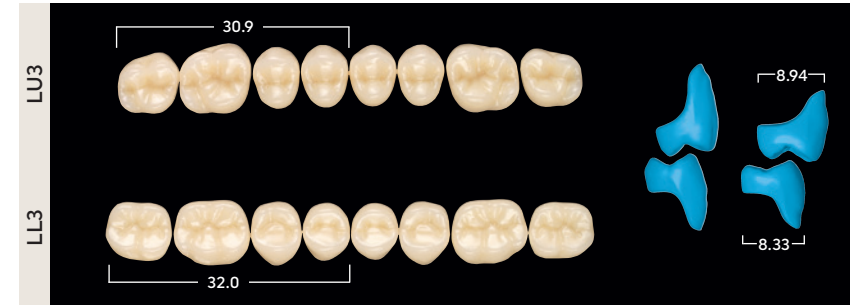
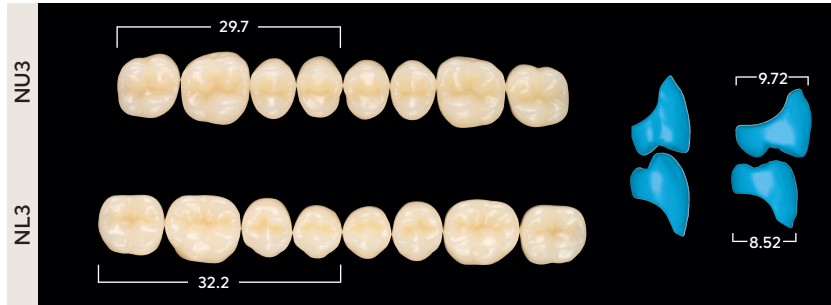
Bold



SR Phonares® II Typ

SR Phonares® II Lingual

Posterior teeth



Processing instructions

Shades

- 16 A-D shades
- 4 Bleach shades

Shade selection

The tooth shade is determined with the help of SR Phonares® II shade guide.



The sample teeth of the SR Phonares II shade guide feature the same layering structure and material as the marketed original teeth. Shade deviations will be consequently reduced to a minimum. The shade selection with the patient should be carried out under defined light conditions (5,500 K colour temperature) or during daylight (preferably light from the north).

Minimum layer thickness

It must be ensured that the stability of the teeth and the correct shade effect are maintained. It is therefore recommended to observe the minimum layer thickness.

- Anterior teeth: min. 2.5 mm
- Posterior teeth: Central fossa min. 2.0 mm, cusp tips min. 2.5 mm, cervical area min. 2.5 mm

Important

To ensure that removable dentures remain functional in the oral cavity over longer periods of time, the following prerequisites should be met:

- **Dental materials may only be processed by dental professionals.**
- **Fabrication in the dental laboratory according to the principles of best practice.**
- To ensure a reliable material bond between PMMA/composite teeth and the denture base material, clean the teeth with steam, roughen them and apply monomer. When using an auto-curing polymer for finishing, it is recommended to create additional mechanical retentions.
- The teeth should not come into contact with a flame or direct heat (e.g. alcohol torch).
- Heat development as a result of too much pressure during grinding must be prevented.
- Contact with solvents must be prevented.

Combination table

		SR Phonares® II		SR Phonares® II Typ	SR Phonares® II Lingual
		Anterior teeth		Posterior teeth	
		upper	lower	upper/lower	upper/lower
Small	Soft	S61	L50, L51	NU3/NL3	LU3/LL3
		S71	L50, L51	NU3/NL3, NU5/NL5	LU3/LL3, LU5/LL5
		S81	L50, L51	NU3/NL3	LU3/LL3, LU5/LL5
	Bold	B61	L50, L51	NU3/NL3	LU3/LL3
		B71	L50, L51	NU3/NL3, NU5/NL5	LU3/LL3
		B81	L50, L51	NU3/NL3	LU3/LL3
Medium	Soft	S62	L52, L53	NU3/NL3, NU5/NL5	LU5/LL5
		S72	L52, L53	NU5/NL5	LU5/LL5, LU6/LL6
		S82	L52, L53	NU5/NL5	LU5/LL5, LU6/LL6
	Bold	B62	L52, L53	NU3/NL3, NU5/NL5	LU5/LL5, LU6/LL6
		B72	L52, L53	NU3/NL3, NU5/NL5	LU5/LL5, LU6/LL6
		B82	L52, L53	NU3/NL3, NU5/NL5	LU3/LL3, LU5/LL5
Large	Soft	S63	L54, L55	NU5/NL5	LU6/LL6
		S73	L54, L55	NU5/NL5, NU6/NL6	LU6/LL6
		S83	L54, L55	NU5/NL5, NU6/NL6	LU6/LL6
	Bold	B63	L54, L55	NU6/NL6	LU6/LL6
		B73	L54, L55	NU6/NL6	LU6/LL6
		B83	L54, L55	NU5/NL5, NU6/NL6	LU6/LL6

This combination table is recommended as a guideline. In case of particular anatomical conditions, deviations are possible. The offer may vary from country to country.

United States: Ivoclar | 175 Pineview Drive | Amherst | New York 14228
716-691-0010 | 800-533-6825 | Fax: 716-691-2285

Canada: Ivoclar | 1 - 6600 Dixie Road | Mississauga | Ontario L5T 2Y2
905-670-8499 | 800-263-8182 | Fax: 905-670-3102

[ivoclar.com](https://www.ivoclar.com)