

Tooth mould chart

Ivostar®
Gnathostar®

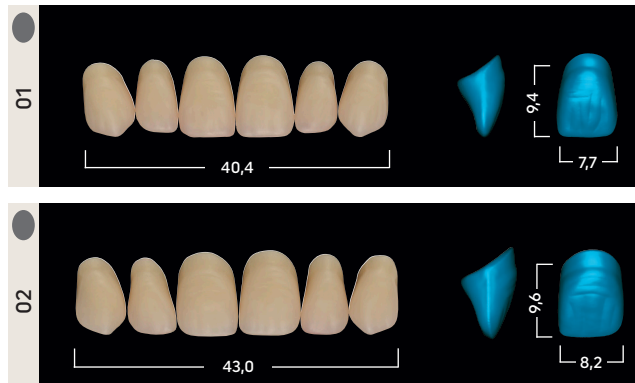
Denture teeth made
of quality PMMA



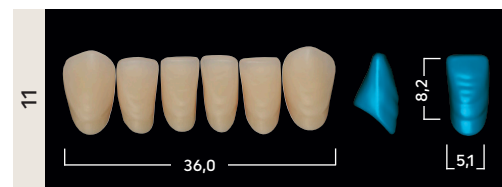
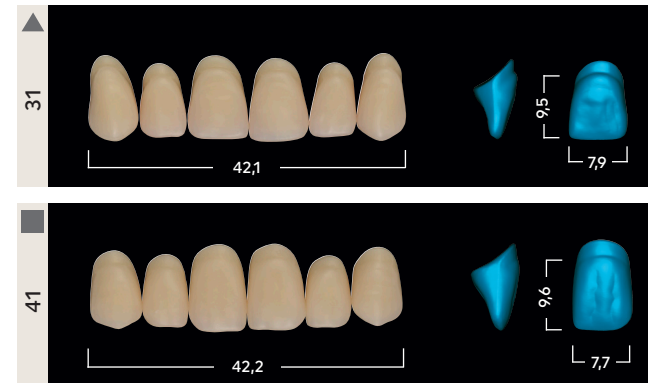
Ivostar

Small

soft



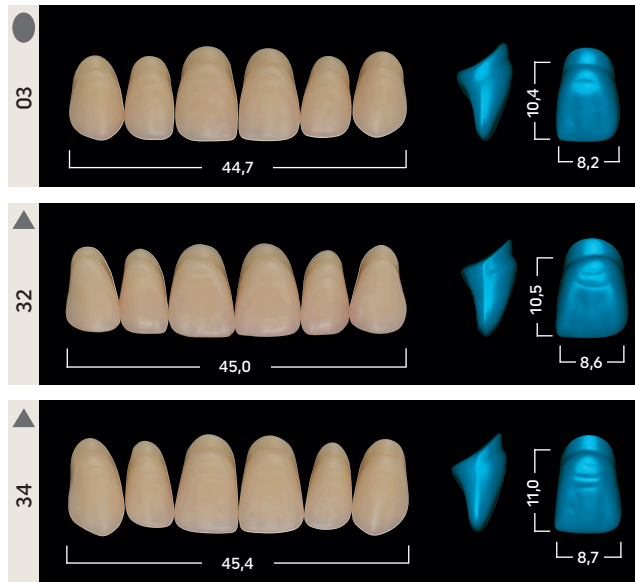
bold



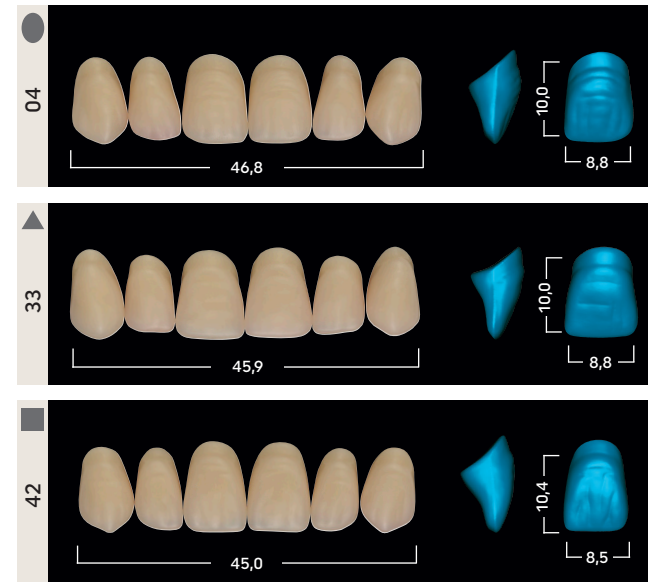
Ivostar

Medium

soft

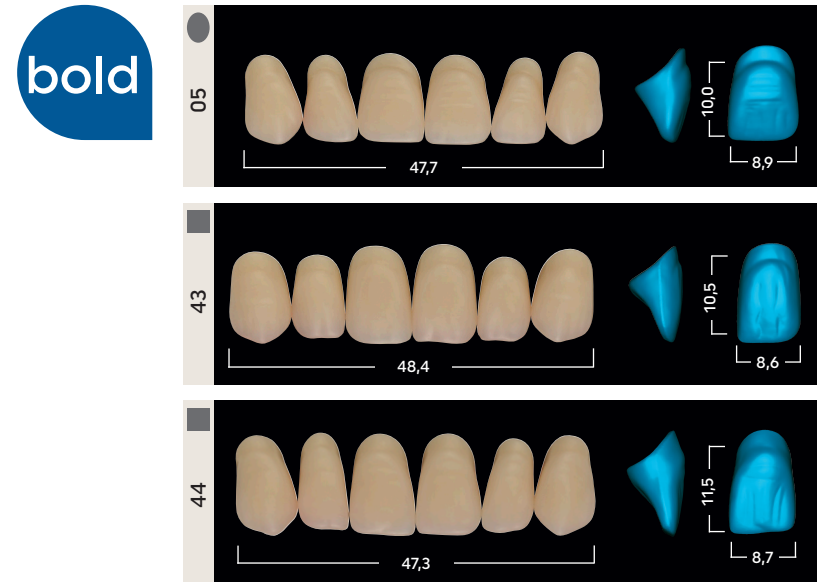


bold



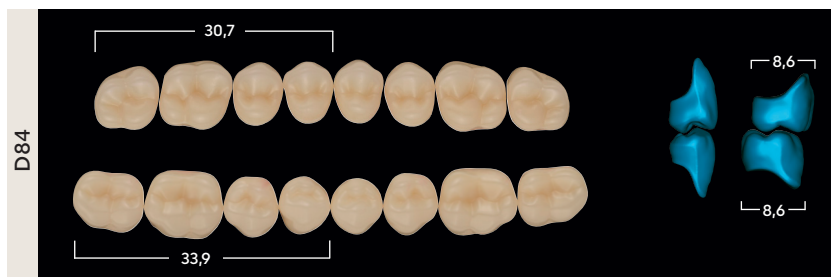
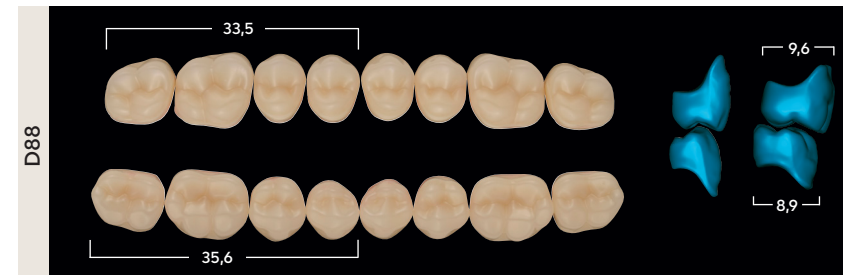
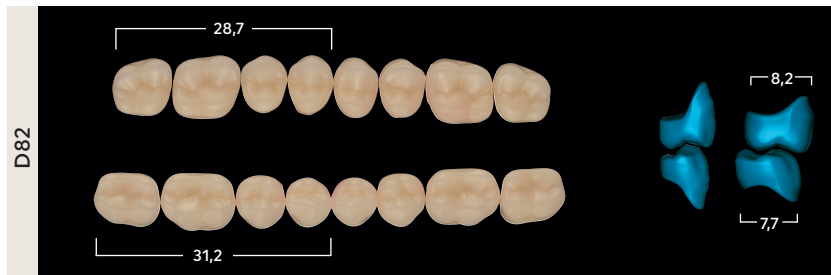
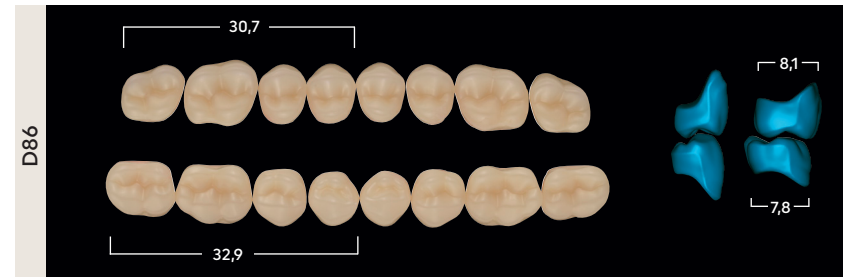
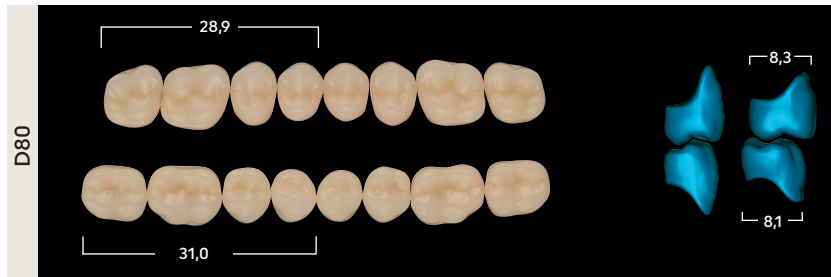
Ivostar

Large



Gnathostar

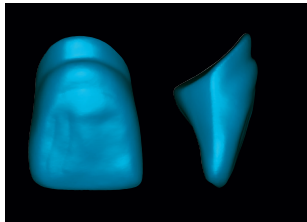
Posterior teeth



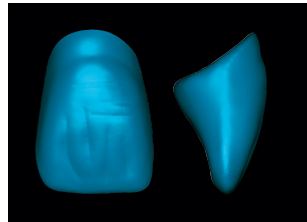
Processing instructions

Anterior tooth selection

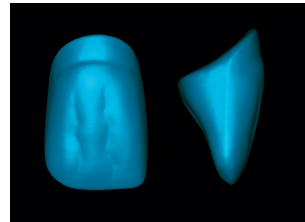
If possible, the anterior teeth should be selected directly with the patient according to anatomical and facial characteristics. The anterior teeth are categorized into triangular, oval and square tooth moulds. Additionally, there are soft and bold tooth forms. However, it should be noted that each mould has its own distinctive character.



▲ Triangular tooth moulds
This group is characterized by teeth having a rejuvenating crown which tapers towards the cervical ridge. The vertical curvature is slightly indicated.



● Oval tooth moulds
The teeth of this category have a pronounced gingivo-incisal curvature. The labial curvature is particularly accentuated.



■ Square tooth moulds
With this angular shape, the central incisor is dominant. The gingivo-incisal curvature is moderate.

Shade determination

The tooth shade is determined with the help of a shade guide according to the A–D shade system.



The shade selection with the patient should be carried out under defined light conditions (5,500 K colour temperature) or during daylight (preferably light from the north).

Minimum layer thickness

It must be ensured that the stability of the teeth and the correct shade effect are maintained. It is therefore recommended to observe the minimum layer thickness.

- **Anterior teeth: min. 2.5 mm**
- **Posterior teeth: Central fossa min. 2.0 mm, cusp tips min. 2.5 mm, cervical area min. 2.5 mm**

Important

To ensure that removable dentures remain functional in the oral cavity over longer periods of time, the following prerequisites should be met:

- **Dental materials may only be processed by dental professionals.**
- **Fabrication in the dental laboratory according to the principles of best practice.**
- To ensure a reliable material bond between PMMA/composite teeth and the denture base material, clean the teeth with steam, roughen them and apply monomer. When using an auto-curing polymer for finishing, it is recommended to create additional mechanical retentions.
- The teeth should not come into contact with a flame or direct heat (e.g. alcohol torch).
- Heat development as a result of too much pressure during grinding must be prevented.
- Contact with solvents must be prevented.

Combination table

| Shape | Ivostar® | | Gnathostar® |
|-------|-----------|--------|---------------|
| | Anteriors | | Posteriors |
| | upper | lower | upper/lower |
| ▲ | 31 | 13, 14 | D80, D82, D86 |
| | 32 | 11, 15 | D84, D88 |
| | 33 | 11, 15 | D84 |
| | 34 | 14, 15 | D84, D88 |
| | 35 | 15, 16 | D84, D88 |
| ■ | 41 | 14 | D80, D86 |
| | 42 | 15 | D84, D88 |
| | 43 | 16 | D88 |
| | 44 | 14, 15 | D88 |
| | 45 | 16 | D88 |
| ● | 01 | 12, 13 | D80, D82 |
| | 02 | 12, 13 | D80, D82 |
| | 03 | 11, 15 | D84 |
| | 04 | 11, 15 | D84 |
| | 05 | 11, 15 | D84, D88 |

This combination table is recommended as a guideline. In case of particular anatomical conditions, deviations are possible. The offer may vary from country to country.

Making People Smile

United States

Ivoclar | 175 Pineview Drive | Amherst | New York 14228
716-691-0010 | 800-533-6825 | Fax: 716-691-2285

Canada

Ivoclar | 1 - 6600 Dixie Road | Mississauga | Ontario L5T 2Y2
905-670-8499 | 800-263-8182 | Fax: 905-670-3102

ivoclar.com

CE 0123

ISO 22112:2017

Descriptions and data constitute
no warranty of attributes.

Date information prepared: Rev1 11/2023
635019