

The fast,
predictable
process

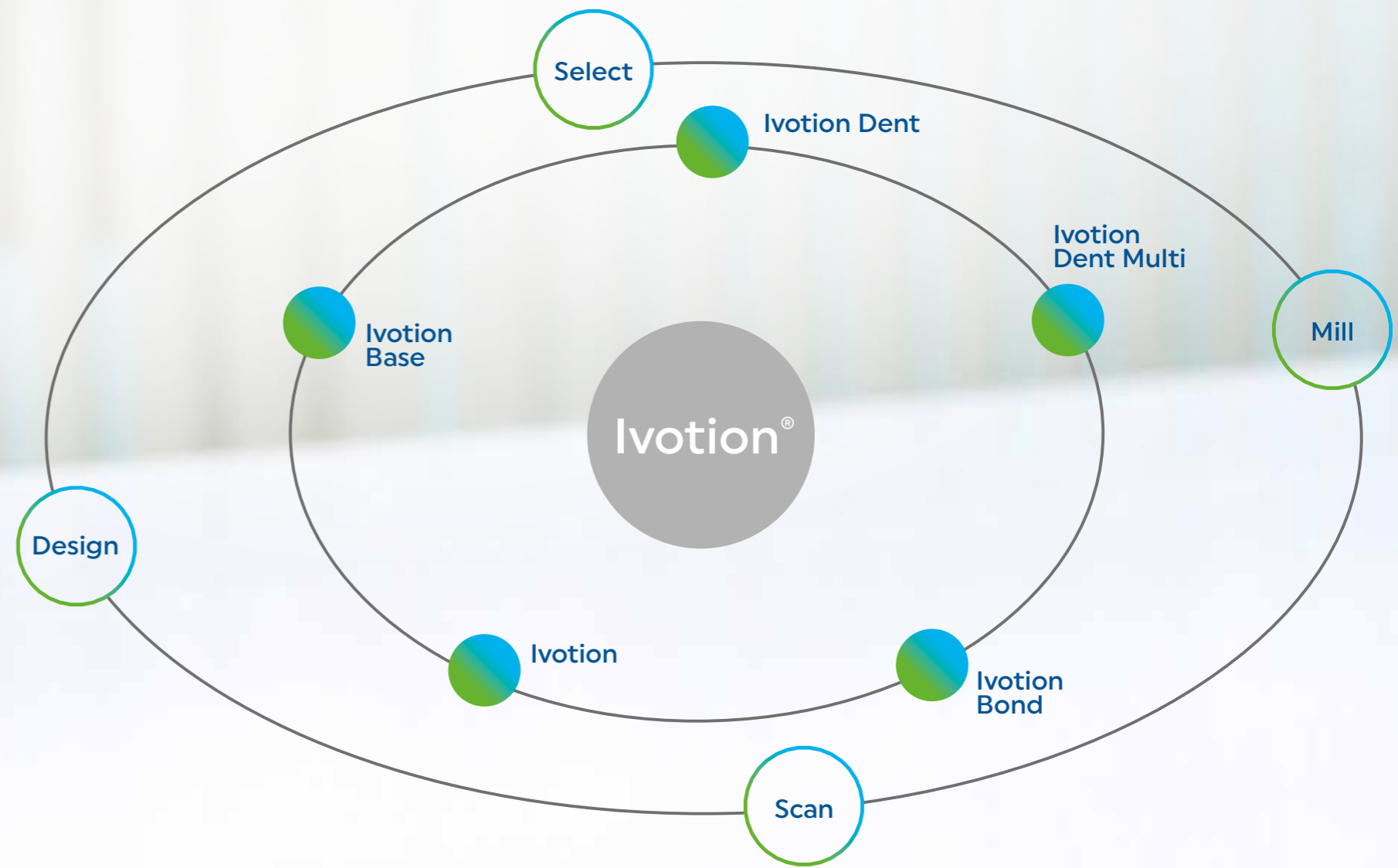
Digital Denture

Removable dentures made
from one disc using the
Ivotion® Denture System

Experience new dimensions. Seamlessly.

The Ivotion® Denture System offers a seamless and fast digital manufacturing process for fabricating top-quality removable dentures.

The seamless workflow involves established clinical treatment steps and efficient digital laboratory fabrication methods.



Fast

- ✓ Only a few manual work steps
- ✓ Fast tooth setup due to extensive tooth libraries

Predictable

- ✓ Reliable results for dental technicians, dentists and patients
- ✓ Customized dentures
- ✓ Integrated and validated workflows

Top quality

- ✓ Premium PMMA material ensures high strength and biocompatibility
- ✓ No bonding of tooth and denture base material required
- ✓ Highly resistant to plaque and discolouration

- Materials
- Workflow

Test the difference.
Ivotion®.

One disc. One process. One denture.
Ivotion is at the centre of this system. This monolithic disc features both tooth and denture base materials and allows to fabricate customized complete dentures in one continuous milling process.

Have a look. Close up.

Shell Geometry

The Shell Geometry is a data-based, three-dimensional tooth and dental arch structure which is designed for fabricating upper and lower dentures. This innovative technology is located within the disc and defines the transition between the tooth and the denture base parts of the disc.

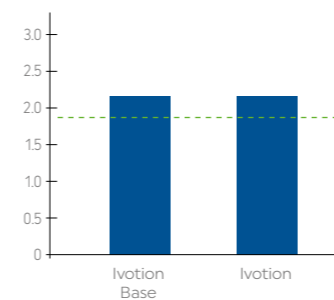
A large number of time-tested complete dentures that are still in service were analysed to establish the common denominator on which this structure is based. In the intuitive CAD design process, the dentures are customized to the patient's needs with the help of the Shell Geometry. This digital technique allows you to fabricate dentures for a wide range of jaw shapes and sizes.



"Patients benefit tremendously from Ivotion dentures. They hardly crack or fracture. Even dentures that have accidentally fallen into the sink remained undamaged. None of the teeth broke off. These dentures are made to last."

Dr Michael Weyhrauch, Dentist
Mühltal, Germany

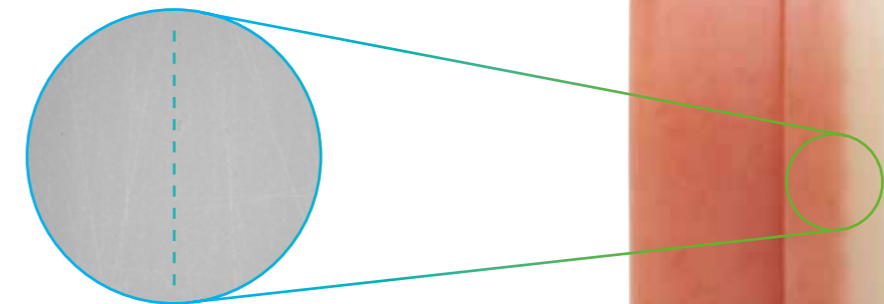
Fracture toughness¹ [MPa*m^{1/2}]



High-quality PMMA material

Ivotion combines a highly proven cross-linked PMMA tooth material with a premium denture base

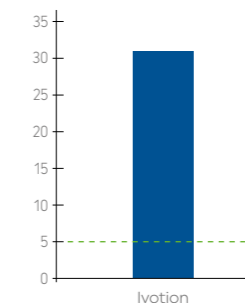
[1] Fracture toughness properties $K_{Ic,max}$ based on ISO 20795-1:2013, internal test. The green line indicates the minimum requirements ($K_{Ic,max} \geq 1.9 \text{ MPa} \cdot \text{m}^{1/2}$) for high-impact denture base materials in accordance with the standard.



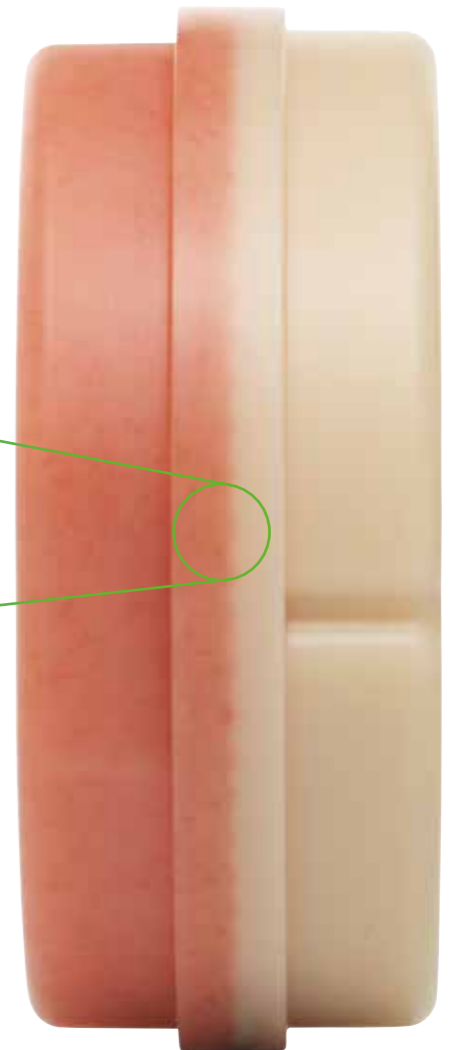
Firmly connected

A state-of-the-art manufacturing process produces a tight chemical bond between the two materials to produce a smooth-transition and a stress-free monolithic disc.

Bond strength² [MPa]



[2] Shear bond strength value of Ivotion, measured on the basis of ISO 10477:2018, internal test. Sample values are shown. The green line indicates the minimum requirements ($\geq 5 \text{ MPa}$) in accordance with the standard.



More than just a disc. Much more.

The sophisticated Ivotion® portfolio is suitable for a wide range of removable prosthetic applications, such as:

- Individual complete dentures
- Complete dentures
- Implant-supported dentures
- Duplicate complete dentures
- Immediate complete dentures
- Overdentures



Ivotion® portfolio

Ivotion®

By combining high-quality tooth and denture base materials in one single disc, Ivotion offers an efficient, predictable, monolithic milling solution.



Tooth shades:
BL3, A1, A2, A3, A3.5, B1
Gingiva shades:
Preference, Pink-V, US-D
Thickness: 38 mm

Ivotion® Dent Multi

The Ivotion Dent Multi discs are made of multichromatic DCL material. The harmonious progression of the shade within the disc imparts the denture teeth with exceptional esthetic properties. They do not require any time-consuming additional characterization.



Shades:
BL3, A1, A2, A3, A3.5, B1, B3, C2, D2
Thickness: 20 mm

Ivotion® Dent

The Ivotion Dent discs are made of tooth-coloured, monochromatic DCL material. They are characterized by outstanding translucency and lifelike fluorescence.^[3]



Shades:
BL3, A1, A2, A3, A3.5, B1, B3, C2, D2
Thickness: 20 mm

Ivotion® Base

The Ivotion Base discs are made of high-impact strength denture base material. The shade range is coordinated with that of the denture base materials from Ivoclar.



Shades:
Pink, Pink-V, Preference, 34-V, US-D
Thickness: 30 mm

Ivotion® Bond

Ivotion Bond generates a strong bond between milled or prefabricated denture teeth and machined denture bases:

Clean processing thanks to:

- ✓ Predosed components ensure clean work procedures
- ✓ Strong bond
- ✓ Universal pink colour matches the denture base



[3] At natural lighting conditions. The use of artificially generated UV or UV-like light may result in a different impression.

Just work. Your way.

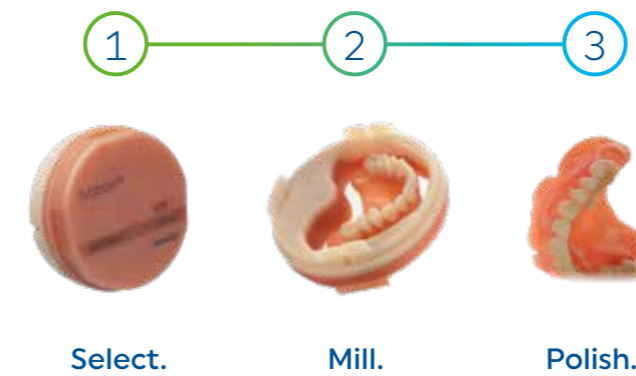
Flexible. Predictable. Efficient.

The seamless workflow combines proven clinical treatment processes and efficient digital lab fabrication methods. Thus, you benefit from high planning reliability and predictable results.

"We simply can't imagine our daily lab routine without Ivotion anymore. It makes our work much easier and more cost-effective and it provides great results – to our benefit and the benefit of dentists and patients alike."

Simon Stroh, MDT and Managing Director
Stroh Dentaltechnik GmbH
Eppelheim, Germany

Monolithic Process with Ivotion®



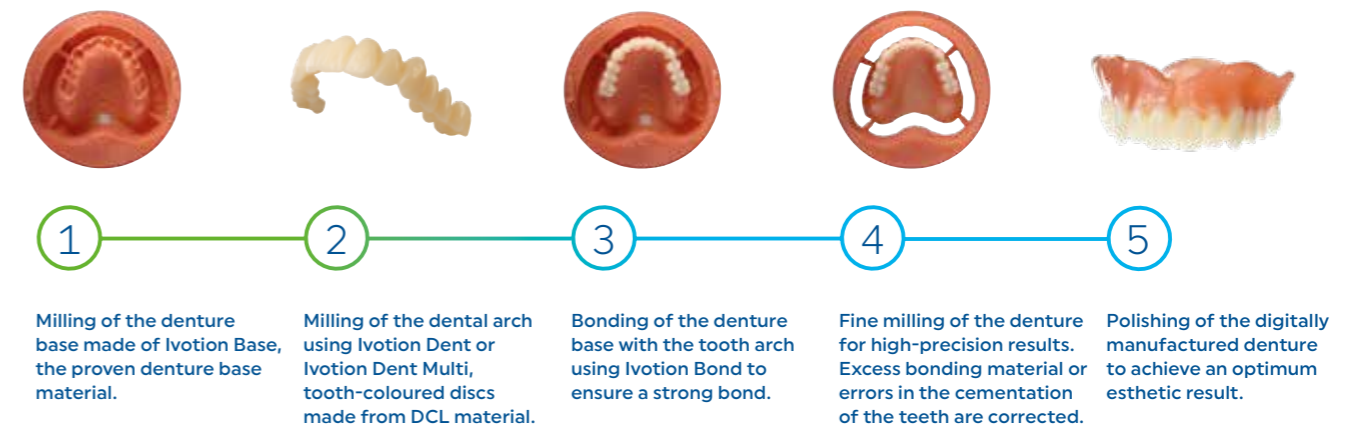
The key to amazing efficiency
After the complete denture has been designed, the monolithic restoration is quickly milled in an uninterrupted milling process in a PrograMill milling machine. The milled denture only needs polishing.

- ✓ Combines tooth and denture base materials
- ✓ The unique shell geometry defines the transition from gingiva to teeth
- ✓ No time-consuming manual production steps

- ✓ High esthetics thanks to the harmonious shade gradient of Ivotion Dent Multi
- ✓ Excellent occlusal fit
- ✓ More flexibility, e.g. for very large dental arches

Oversize Process with Ivotion Base and Ivotion Dent (Multi)

The manufacturing process involving two discs is characterized by exceptional individuality and flexibility: It enables you to tackle even the most challenging cases.



1
Milling of the denture base made of Ivotion Base, the proven denture base material.

2
Milling of the dental arch using Ivotion Dent or Ivotion Dent Multi, tooth-coloured discs made from DCL material.

3
Bonding of the denture base with the tooth arch using Ivotion Bond to ensure a strong bond.

4
Fine milling of the denture for high-precision results. Excess bonding material or errors in the cementation of the teeth are corrected.

5
Polishing of the digitally manufactured denture to achieve an optimum esthetic result.

Scan faster. Simultaneously.

Got a busy dental lab? Then our PrograScan PS7 is just right for you. We have developed this high-end lab scanner for all dental labs to handle increasing production volumes even faster than before.

High speed and perfection

The trick is: The scanner captures upper and lower jaw models simultaneously. Just two minutes later, the digital models are ready in the design software. Compared to sequential scanning, this results in significant time savings.

Compatible
with exocad
DentalCAD

PrograScan® PS7 and PS5:
easy handling, high process reliability and precise results.



One click

- ✓ Starts the workflow from scan to design
- ✓ Minimal user interaction

Two tables

- ✓ For simultaneous scanning
- ✓ Automatic accessory detection

Three
times as
quick

- ✓ Upper and lower jaw models simultaneously
- ✓ 3D models in only 2 minutes



Mill disc after disc. Precisely.

Mill your digital dentures with the coordinated PrograMill® machines and enjoy utmost precision and efficiency.

The materials, the CAD and CAM software and the milling machines all work together smoothly to produce high-precision dentures of the finest quality: Equipped with a high-performance spindle and a material changer, the PrograMill PM7 ensures a highly efficient manufacturing process.

The integrated ionizer neutralizes the static charge of the acrylic shavings produced when machining PMMA materials. The shavings are then easily evacuated for a clean working environment. This helps you save time so that you can focus on other important tasks.

- ✓ Innovative and user-friendly operation
- ✓ Integrated ionizer and automatic self-cleaning, provided by Active Air Suction
- ✓ 8-way material changer for an uninterrupted process



Manufacture your digital dentures with an authorized milling system

Discs of the Ivotion Denture System can be machined in PrograMill milling machines and other authorized milling systems in the validated workflow of Ivoclar.



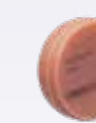
Ivotion



Ivotion Dent



Ivotion Dent Multi



Ivotion Base

Milling system	Ivotion	Ivotion Dent	Ivotion Dent Multi	Ivotion Base
Ivoclar: PrograMill PM7, PM5, PM3, DRY Zenotec select, select hybrid, select ion	✓	✓	✓	✓
VHF: K5, K5+, R5, E5	✓	✓ [2]	✓ [2]	✓ [2]
Amann Girrbach: Ceramill ^[1] Matik, Ceramill ^[1] Motion 2		✓ [2]	✓ [2]	✓ [2]
Dentsply Sirona: inLab ^[1] MC X5		✓ [2]	✓ [2]	✓ [2]

[1] Ceramill and inLab are not registered trademarks of Ivoclar Vivadent AG.
[2] Applies to the individual machining of discs and not to the oversize process.

Be happy. Every day.

With the Ivotion Denture System you are set up for outstanding efficiency.

Your patients gain quality of life and well-being.



Plus points

For dental technicians

- ✓ Reduced working and production time
- ✓ Predictable results
- ✓ Design independent of location (CAD)
- ✓ Accurate and systematic workflow
- ✓ No polymerisation shrinkage or porosity formation
- ✓ Noticeable reduction in repairs and recalls

For dentists

- ✓ Up to 50% fewer patient sessions
- ✓ Guided and recommended clinical workflow
- ✓ Good suction effect
- ✓ Fewer pressure points
- ✓ Easy and fast reproduction (data storage)

For patients

- ✓ Fewer dentist sessions
- ✓ Short waiting time due to fast production
- ✓ Comfortable wearing sensation
- ✓ Natural-looking esthetics^[3]
- ✓ Easy to clean and hygienic
- ✓ Robust and durable
- ✓ Easy to reproduce

[3] At natural lighting conditions. The use of artificially generated UV or UV-like light may result in a different impression.

Digital Denture – The fast, predictable process



Consult

IvoSmile is an augmented reality app for visualizing the patient's dental makeover on an iPad or iPhone.



Scan and design

The high-end lab scanner PrograScan PS7 scans upper and lower jaw models in one process: simultaneous and fully automatic.



Select

Ivotion is a monolithic solution for the fabrication of dentures in only one uninterrupted milling cycle without bonding.



Produce

PrograMill PM7 is a powerful milling machine that combines big data, material competence and software to produce high-precision dentures.



Protect

Cervitec Gel helps patients maintain their oral health – so they can enjoy their removable dentures for longer.