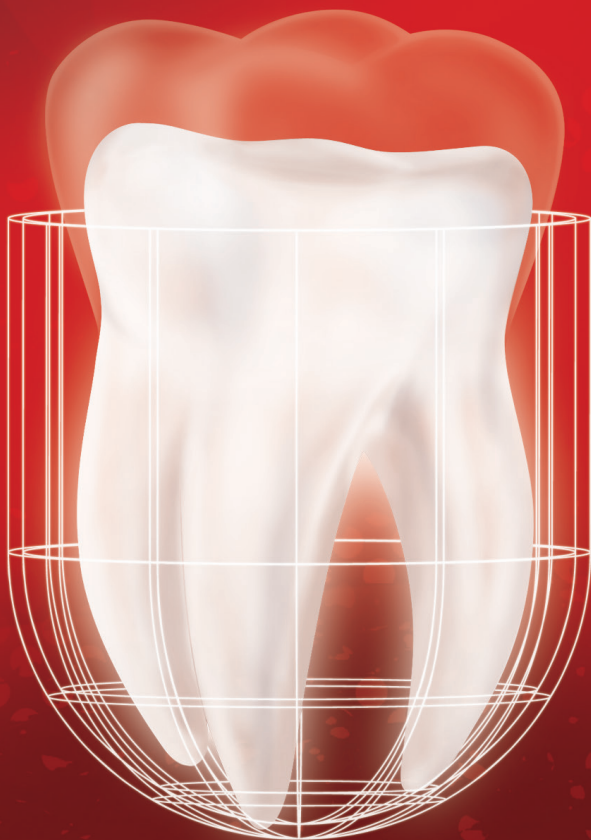


3

REASONS TO USE
Biodentine™



1 AVOID **(UNNECESSARY)** **ENDO**



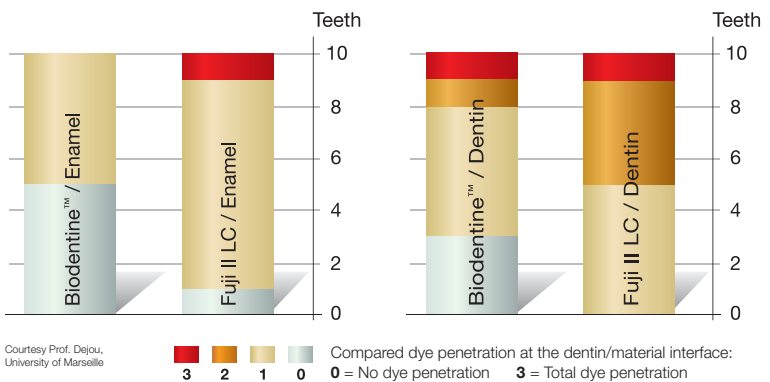
**SAVE 45 MINUTES²
OF YOUR TIME WITH
EACH CAPSULE OF
BIODENTINE™!**



BIODENTINE™ KEEPS THE PULP VITAL IN DEEP CAVITIES AND PULP EXPOSURES

BY CREATING A PROTECTIVE LAYER FOR THE PULP UNDER COMPOSITE RESTORATIONS

- Biodentine™ triggers pulp cell differentiation³
- Biodentine™ helps build the dentin bridge⁴
- Biodentine™ reduces the risk of secondary caries due to outstanding leakage resistance



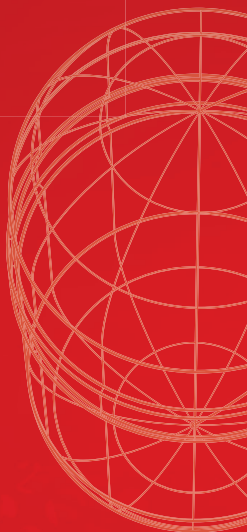
All registered trademarks and copyrighted product names are the property of their companies and affiliates

1. In case of irreversible pulp inflammation, the root canal treatment needs to be performed
 2. E.I.D Paris: Average length of a root canal treatment (2007)
 3. About Int Endod J. 2012 May; 45(5):439:48
 4. Nowincka J Endod 2013 Jun; 39(6):743-7



**GET RID
OF
POST-OP
PAIN**

**REDUCE
CALL-BACKS
FROM PATIENTS!**



BIODENTINE™ VIRTUALLY ELIMINATES POST-OP PAIN¹

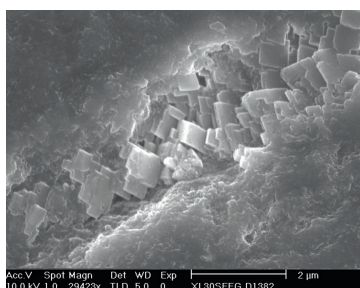
BY CREATING A TIGHT SEAL WITHIN THE DENTIN TUBULES

- Biocompatible, high purity calcium silicate: low risk of tissue reaction
- Mineral tags tightly seal the dentin tubules network
- No shrinkage and related shrinkage stress on the tooth because of its resin-free formulation
- The final composite is bonded to Biodentine™, to ensure minimal risk of post-operative sensitivity



Biodentine™ cement labeled with fluorescein dye which has moved from the cement into the dentin tubules. Notice the plugs of material in the tubule openings.

Courtesy Dr Amre Atmeh, King's College London



Mineral tags inside dentin tubules
Courtesy Prof. Franquin, Koubi, Dejou,
University of Marseille



**MAKE
YOUR JOB
SIMPLER
& FASTER**

**SAVE CHAIR
TIME WITH
EACH PATIENT!**



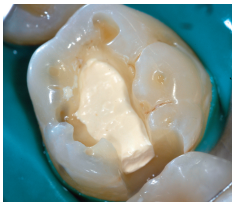
ONLY ONE MATERIAL FOR DENTIN BULK REPLACEMENT!

BIODENTINE™ EXHIBITS NO DEPTH OF CURE LIMITATION

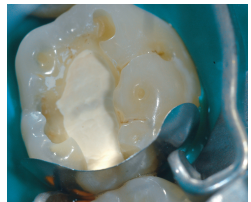
- Biodentine™ placement is easier and faster as the material is placed in one single increment
- You bond the composite to finish the full restoration in the same session
- Biodentine™ reduces your inventory: Calcium Hydroxide and Glass Ionomers are no longer necessary and less composite is used



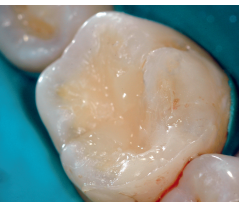
Iatrogenic pulp exposure occurred after complete caries excavation during the final finishing of the cavity



Biodentine™ is applied to the cavity to replace the dentin layer



A matrix band and wedges are put in place to finish the restoration



The composite restoration is bonded onto Biodentine™ after 12 min from start of mix



1-year follow-up: clinical view



The 1-year follow-up radiograph shows no pathological changes in the apical region

**BIODENTINE™
IS ACKNOWLEDGED
WORLDWIDE THROUGH
SCIENTIFIC PUBLICATIONS,
CASE REPORTS,
ARTICLES...**

Please visit our website for more information
www.septodont.com



Presentation

Available in:

- Box of 15 capsules and 15 single-dose containers
- Box of 5 capsules and 5 single-dose containers



The Dental Pharmaceutical Company

INNOVATIVE, SAFE AND EFFECTIVE SOLUTIONS FOR DENTISTRY WORLDWIDE