

Achieve high-quality esthetics.  
Maximize efficiency.

## Direct Restoratives

Our solution  
for efficient esthetics



# Our integrated product solution for your direct restorative needs

Achieve a better patient experience, faster treatments and stronger results. Try our direct restorative workflow products.

## Get access to the Direct Restorative Knowledge Hub



Are you looking for tutorial videos on our direct restorative products and do you want to learn more about the workflow?

Simply scan the QR code and follow the link to our exclusive educational material, including tutorials, webinars, case studies, expert interviews and more.



For detailed instructions on how to use the products, please refer to the Instructions for Use for each individual product.

Source of clinical pictures: Ivoclar Vivadent AG, Liechtenstein.

## Isolate with OptraGate®

OptraGate is a lip and cheek retractor that improves the overall view and accessibility of the treatment field.



Choose the appropriate size (regular, small or junior) by using the orientation scale on the packaging.



For an easy placement with the tabs pointing downward, you need to grasp the thicker and flexible intraoral ring by reaching through the thinner extraoral ring.



Hold the inner ring between your thumb and middle finger and press together slightly.



Place OptraGate first in one corner of the mouth and then in the opposite one. Subsequently position OptraGate behind the lower and upper lips.

# Bond with Adhese® Universal

Adhese Universal in the unique VivaPen® is a single-component light-cured adhesive for direct and indirect restorations and all etching protocols <sup>[1]</sup>.



Use the easy click mechanism by pushing the blue button and wait until the application tip is saturated with the adhesive. Repeat if required. The application tip is saturated when the yellow colour of Adhese Universal is visible.



With the VivaPen you can apply the adhesive directly into the patient's mouth.

Scrub the adhesive into the tooth surface for at least 20 seconds.



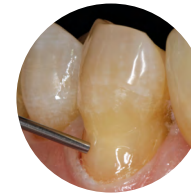
Disperse Adhese Universal with oil- and moisture-free compressed air until glossy.



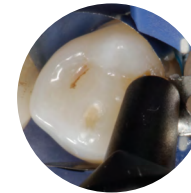
Then light cure according to Instructions for Use.

# Restore with the Tetric® Line

The Tetric Line comprises four coordinated composites for direct restorative treatments. Tetric EvoFlow and Tetric Prime are our universal composites for all cavity classes <sup>[2]</sup>.



**Tetric EvoFlow** is a flowable 2-mm universal composite.



**Tetric Prime** is a sculptable 2-mm universal composite.



For the anterior and posterior region

## Light exposure times with Bluephase® PowerCure

Light intensity (mW/cm <sup>2</sup> )	Curing time	Curing program
1,000–1,300	10 s	High
1,800–2,200	5 s	Turbo

## Restore with the Tetric® Line

Tetric PowerFlow and Tetric PowerFill are our 4-mm composites for the posterior region.



**Tetric PowerFlow** is a self-levelling, flowable posterior 4-mm composite.



**Tetric PowerFill** is a sculptable posterior 4-mm composite.



For the posterior region

Light exposure times  
with Bluephase®  
PowerCure

Light intensity (mW/cm <sup>2</sup> )	Curing time	Curing program
1,000–1,300	10 s	High
1,800–2,200	5 s	Turbo
2,700–3,300	3 s	3s Cure

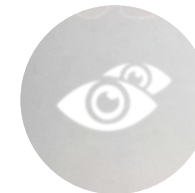
## Cure with the Bluephase® PowerCure

Bluephase PowerCure is the high-performance LED light-curing unit which combines intelligence with efficiency.



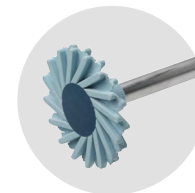
Set the curing program/curing time by pressing the program or time selection button.

Activate the intelligent curing assistant by long pressing the program or time selection button.



The intelligent curing assistant detects movement of the handpiece during the light-curing procedure.

## Polish with OptraGloss®



OptraGloss is a universal polishing system that offers high-gloss polishing in only one step. No polishing paste is needed.

### To complete every treatment:

Ivoclar professional care products offer a comprehensive range of dental hygiene solutions to maintain oral health and a beautiful smile.

# Direct restorative treatment for efficient esthetics



Isolate  
with OptraGate



Bond  
with Adhese Universal



Restore  
with the Tetric Line



Contour  
with OptraSculpt



Cure  
with Bluephase PowerCure



Polish  
with OptraGloss



Protect  
with Fluor Protector S