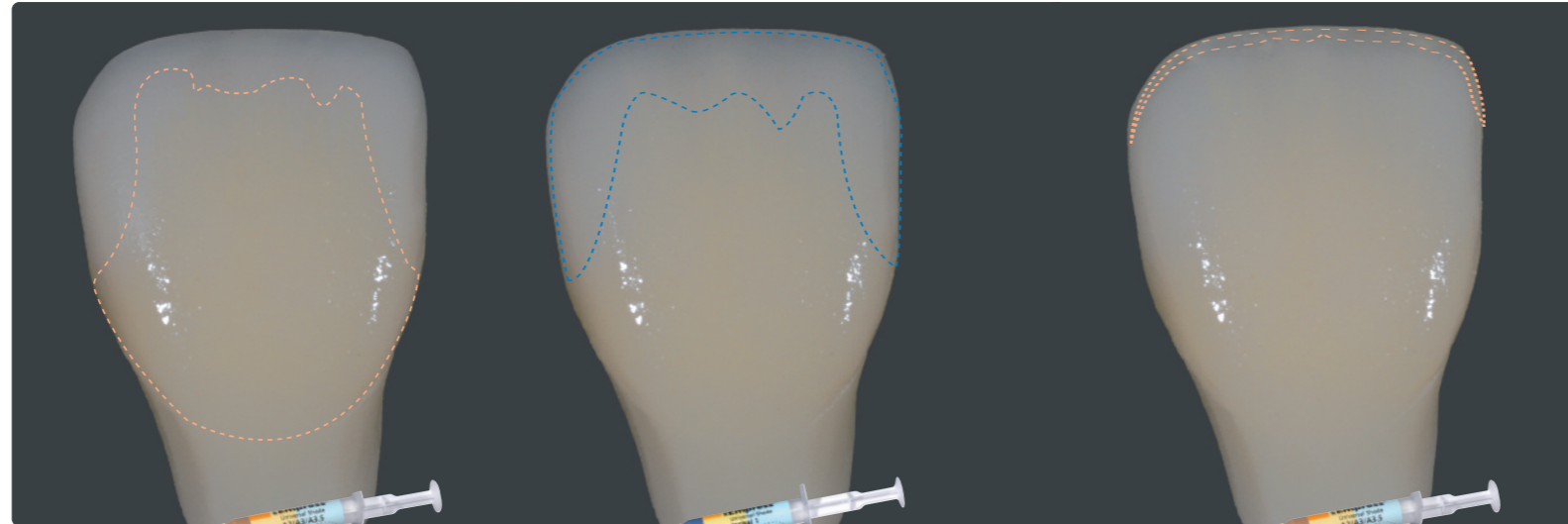


FRONTZAHNKRONE | ANTERIOR CROWN

Variante: Standard Charakterisierung | Variant: Standard characterization



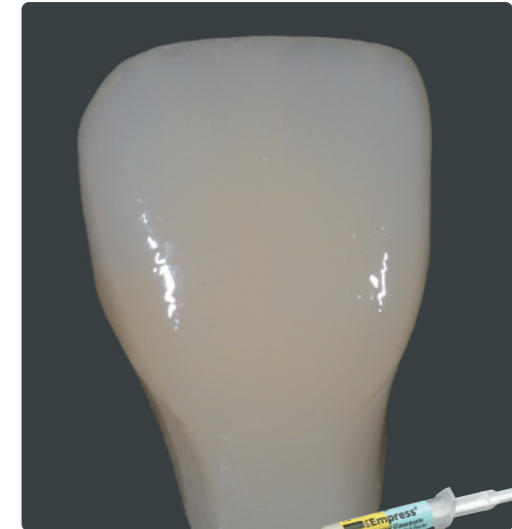
Ausgangssituation  
Starting situation



1. Schritt / 1<sup>st</sup> Step:  
Dentin: Shade A2

2. Schritt / 2<sup>nd</sup> Step:  
Incisal: Shade I1

3. Schritt und Brennen / 3<sup>rd</sup> Step and firing:  
Halo: Shade A2

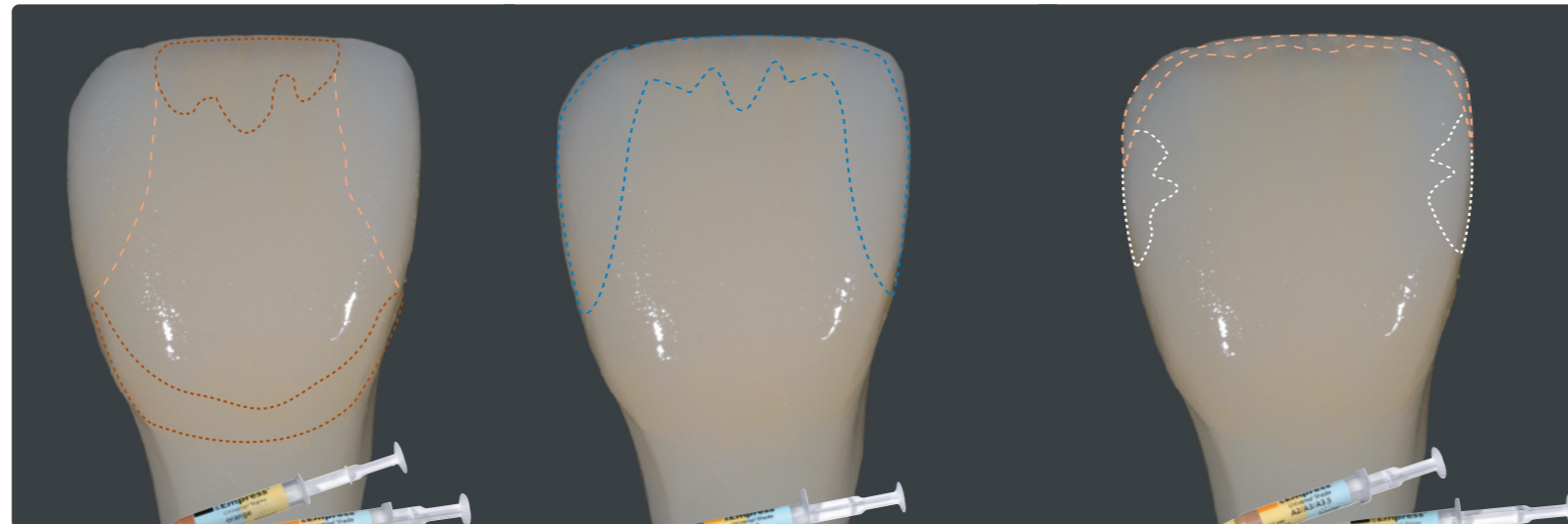


Endsituation glasiert  
Completed restoration glazed

Variante: Individuelle Charakterisierung | Variant: Individual characterization



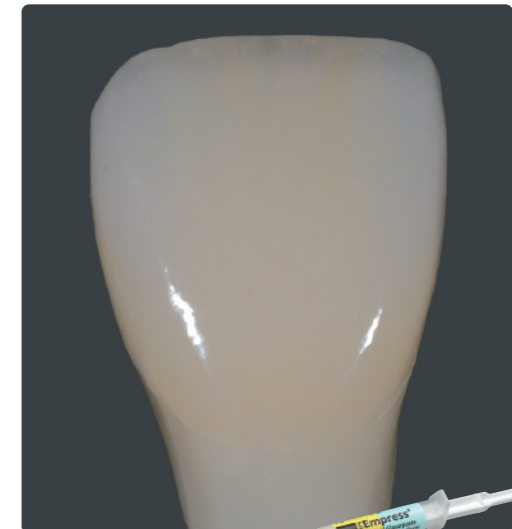
Ausgangssituation  
Starting situation



1. Schritt / 1<sup>st</sup> Step:  
Cervical/Incisal: Stains orange  
Dentin: Shade A2

2. Schritt / 2<sup>nd</sup> Step:  
Incisal: Shade I1

3. Schritt und Brennen / 3<sup>rd</sup> Step and firing:  
Halo: Shade A2  
Approximal / proximal: Stains white



Endsituation glasiert  
Completed restoration glazed

Brennparameter Malfarben- und Charakterisierungsbrand  
Firing parameters Stains and characterization firing

B	S	t <sup>➤</sup>	T	H	V <sub>1</sub>	V <sub>2</sub>
403°C	6 min	100°C	790°C	1 min	450°C	789°C
757°F	6 min	180°F	1454°F	1 min	842°F	1453°F

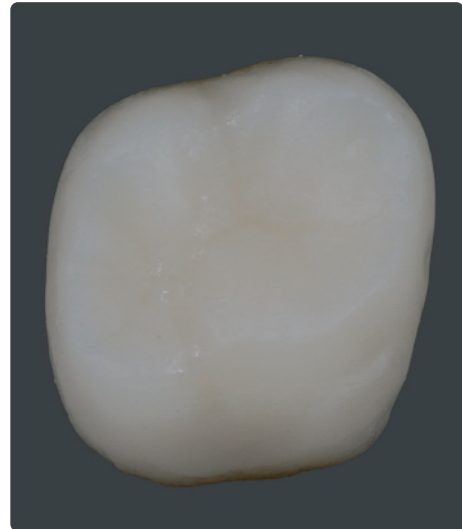
Brennparameter Glanzbrand  
Firing parameters Glaze firing

B	S	t <sup>➤</sup>	T	H	V <sub>1</sub>	V <sub>2</sub>
403°C	6 min	100°C	790°C	1–2 min	450°C	789°C
757°F	6 min	180°F	1454°F	1–2 min	842°F	1453°F

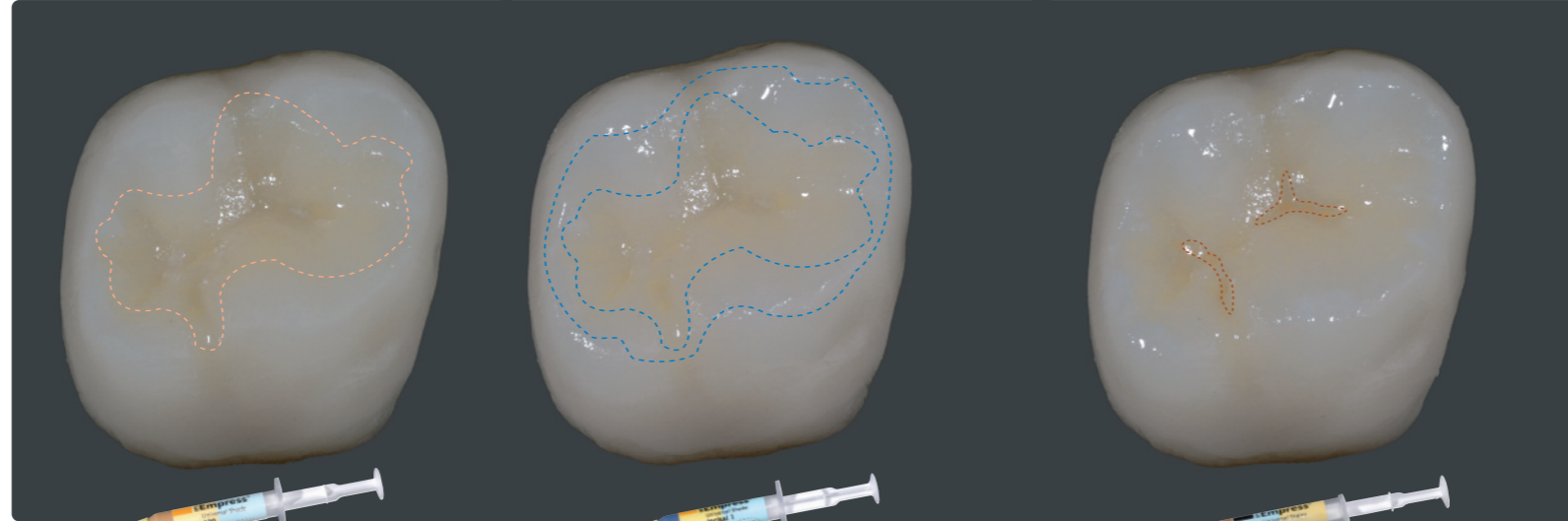
Bitte entsprechende Verarbeitungsanleitung beachten. / Please read the corresponding Instructions for Use.

SEITENZAHNKRONE | POSTERIOR CROWN

Variante: Standard Charakterisierung | Variant: Standard characterization



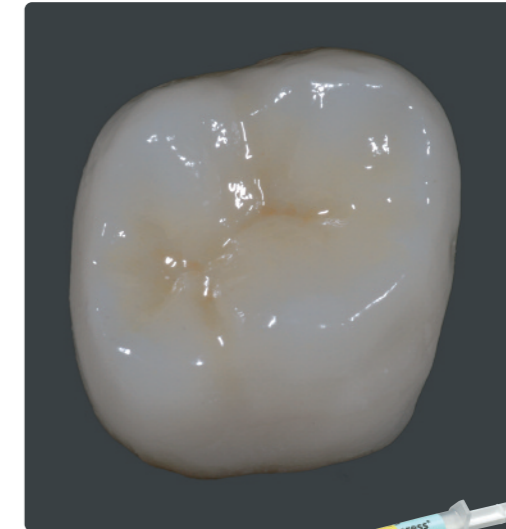
Ausgangssituation  
Starting situation



1. Schritt / 1<sup>st</sup> Step:  
Occlusal: Shade 130

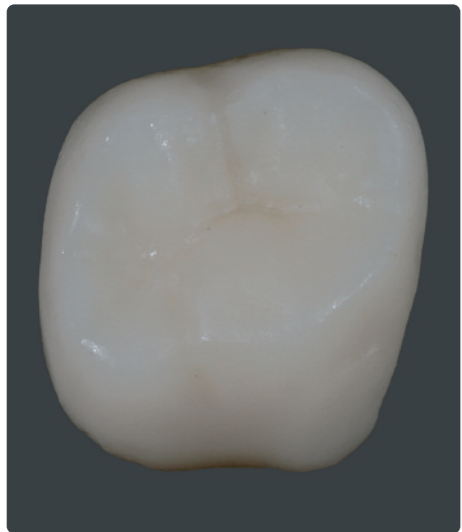
2. Schritt / 2<sup>nd</sup> Step:  
Incisal: Shade I1

3. Schritt und Brennen / 3<sup>rd</sup> Step and firing:  
Fissur / fissure: Stains orange



Endsituation glasiert  
Completed restoration glazed

Variante: Individuelle Charakterisierung | Variant: Individual characterization



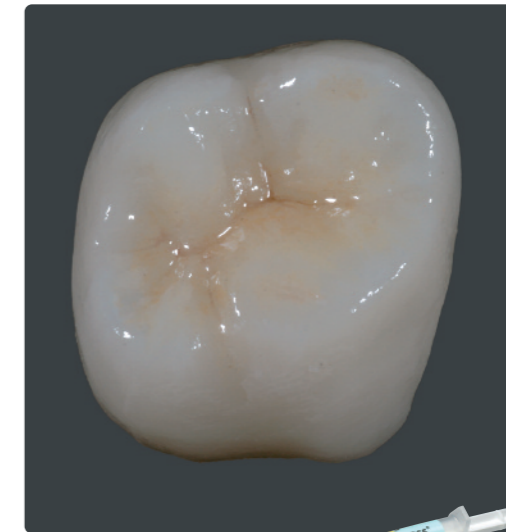
Ausgangssituation  
Starting situation



1. Schritt / 1<sup>st</sup> Step:  
Occlusal: Shade 130  
Occlusal Fossa: Stains orange

2. Schritt / 2<sup>nd</sup> Step:  
Incisal: Shade I1

3. Schritt und Brennen / 3<sup>rd</sup> Step and firing:  
Fissur / fissure: Stains mahogany  
Höcker / cusp: Stains white



Endsituation glasiert  
Completed restoration glazed

Brennparameter Malfarben- und Charakterisierungsbrand  
Firing parameters Stains and characterization firing

B	S	t <sup>st</sup>	T	H	V <sub>1</sub>	V <sub>2</sub>
403°C	6 min	100°C	790°C	1 min	450°C	789°C
757°F	6 min	180°F	1454°F	1 min	842°F	1453°F

Brennparameter Glanzbrand  
Firing parameters Glaze firing

B	S	t <sup>st</sup>	T	H	V <sub>1</sub>	V <sub>2</sub>
403°C	6 min	100°C	790°C	1–2 min	450°C	789°C
757°F	6 min	180°F	1454°F	1–2 min	842°F	1453°F

Bitte entsprechende Verarbeitungsanleitung beachten. / Please read the corresponding Instructions for Use.