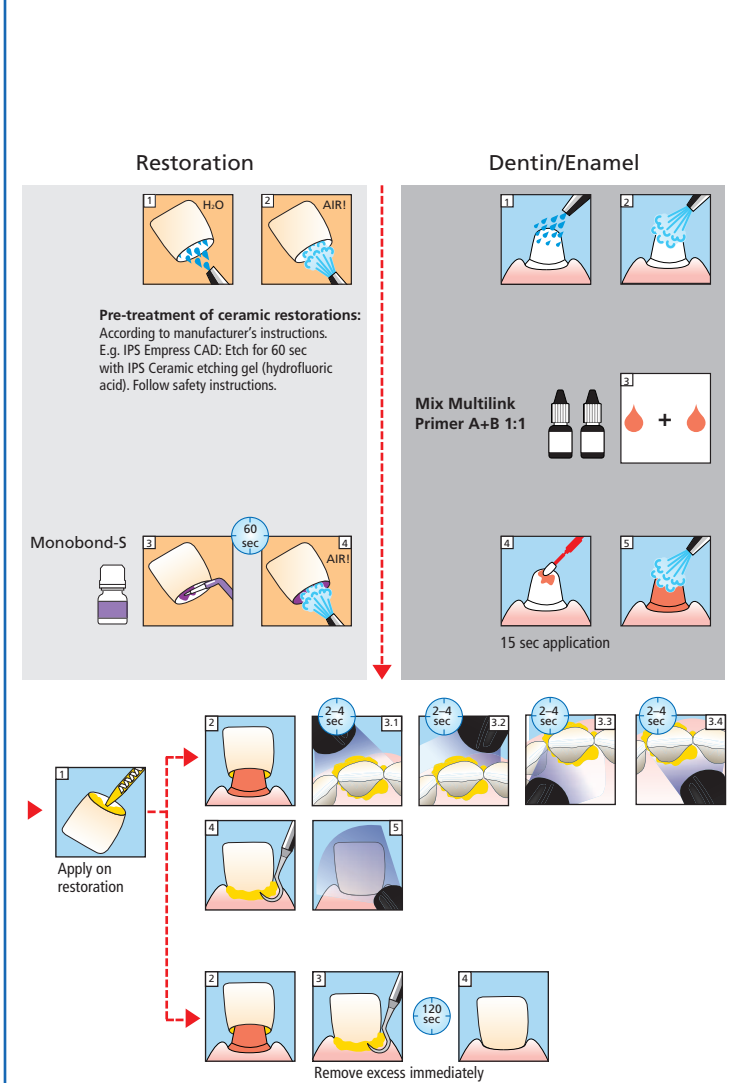
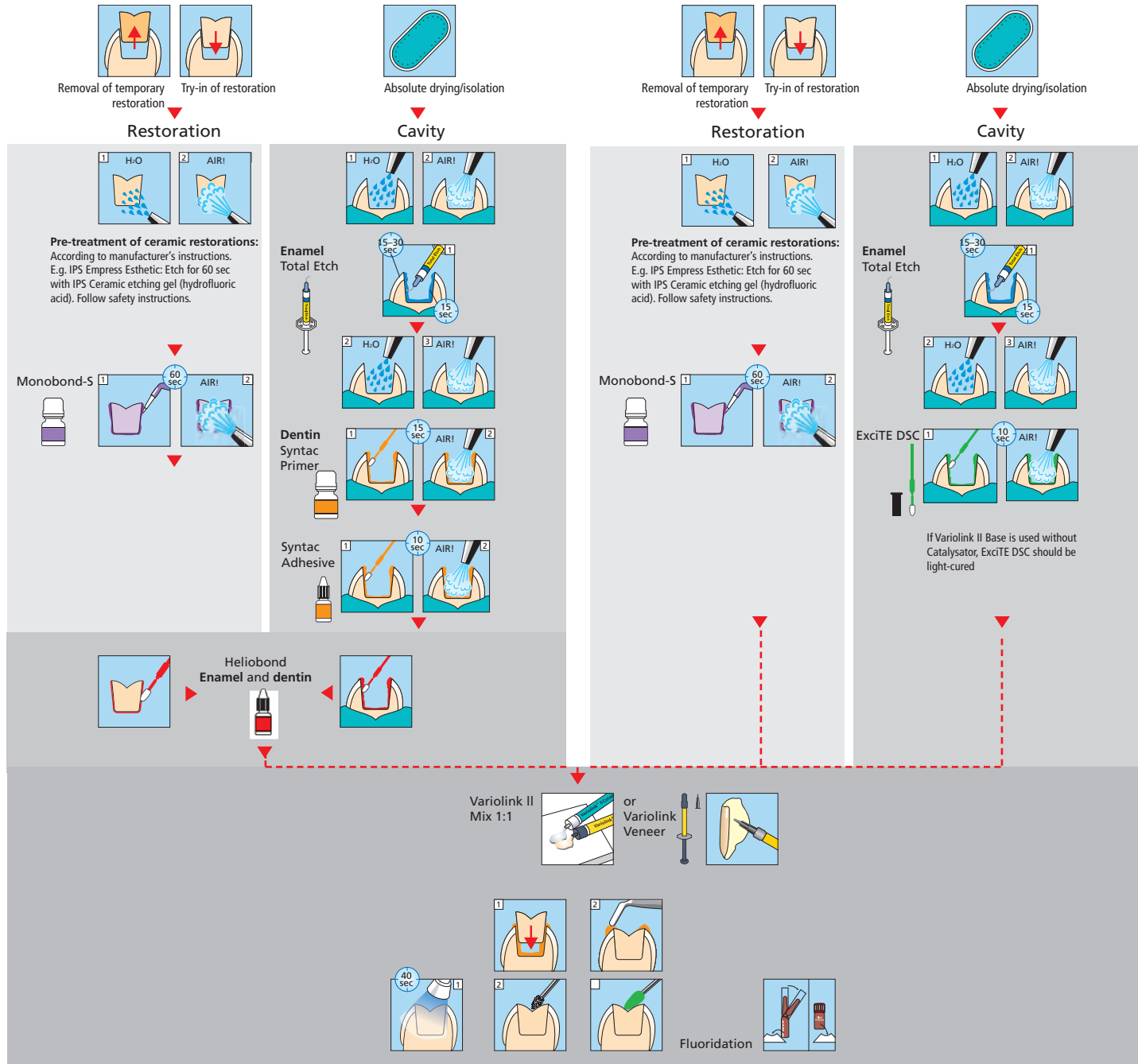


Placement of IPS Empress® Esthetic restorations with

Variolink® II or Variolink Veneer / Syntac®

Variolink® II or Variolink Veneer / Excite® DSC

Multilink® Automix

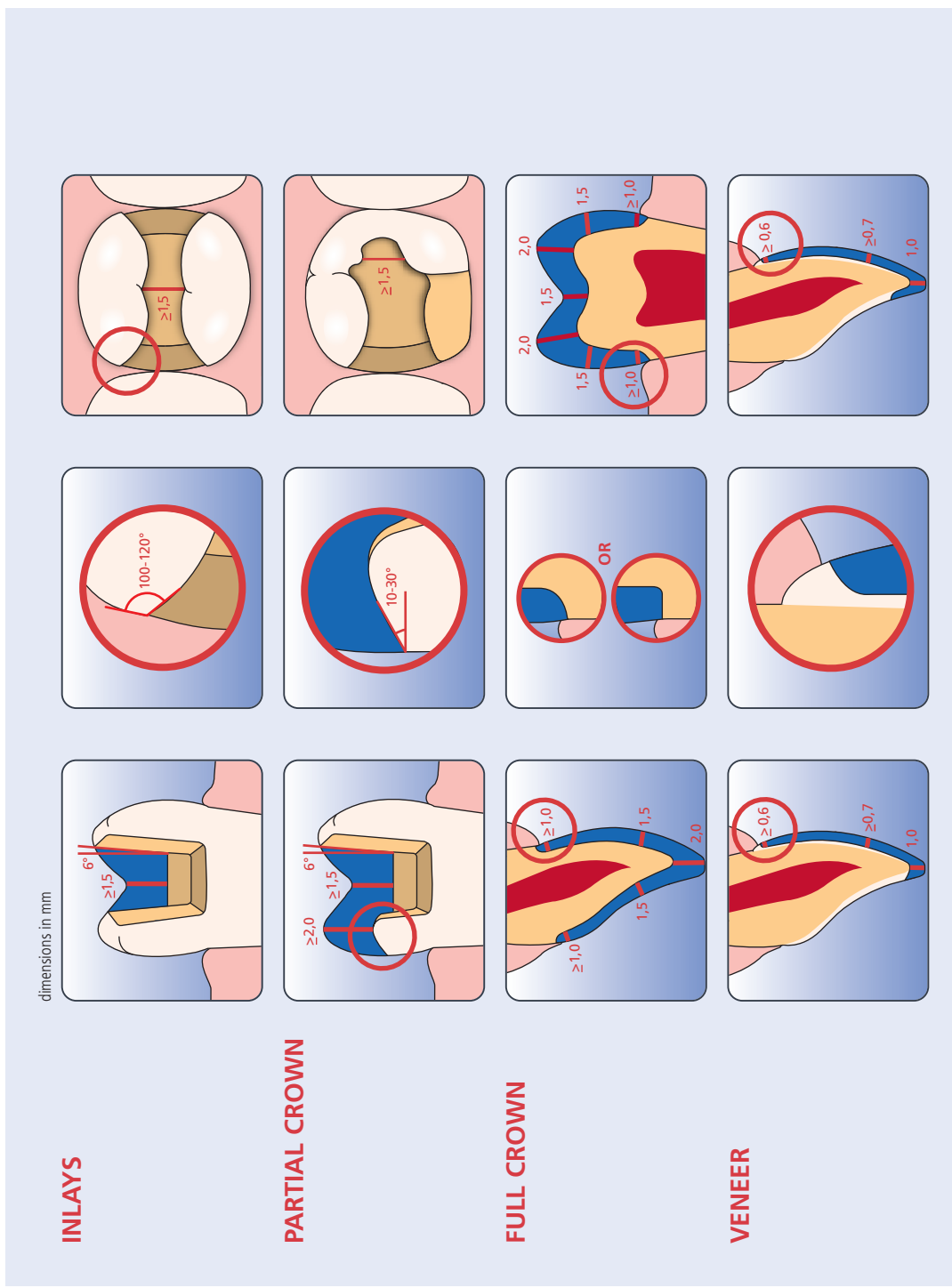




IPS Empress® Esthetic – Preparation Guidelines

Careful preparation is decisive for the durability and accuracy of fit of the restoration.

It is important to properly design the margin with a circular shoulder or chamfer preparation and rounded inner aspects. Transitions with sharp angles and feather edge margins should be avoided. In order to achieve a stable restoration, the minimum wall thicknesses have to be observed.



Adhesive luting

IPS Empress Esthetic restorations have to be adhesively cemented. We recommend Variolink II or Multilink Automix and the dental adhesives Syntac or Excite DSC for the cementation of inlays, partial crowns and full crowns. For IPS Empress Esthetic Veneers Variolink Veneer should be used in particular.

The water-soluble Variolink II/Variolink Veneer Try In Pastes permit shade simulation of ceramic restorations prior to final cementation.

