

Captivating masterpieces

SR Phonares II

High-end denture teeth
made from composite



Impressive material

SR Phonares II composite teeth offer you a combination of durability and esthetics to meet even the highest of expectations in removable denture prosthetics as effectively as possible.

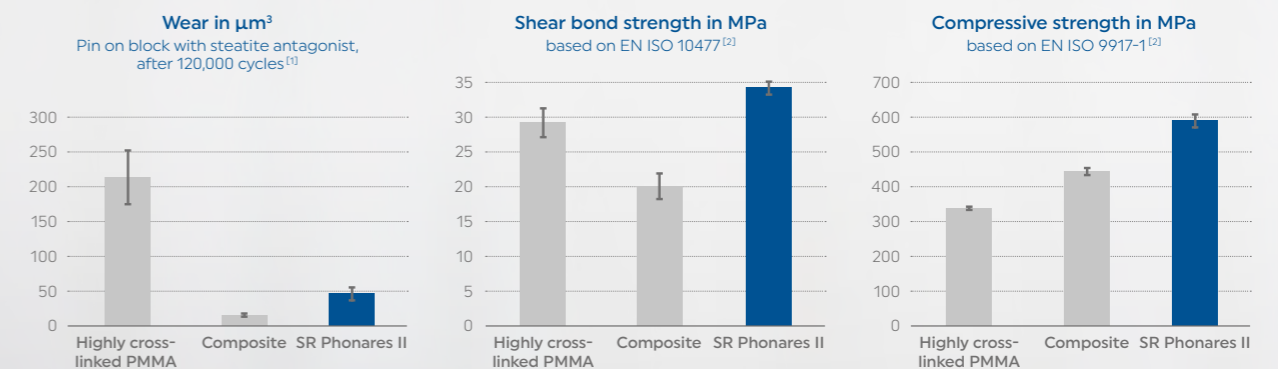


- ✓ 16 A-D shades
- ✓ 4 Bleach shades
- ✓ Customizations possible with our SR Nexco® lab composite.

At a glance	SR Phonares II
Anterior tooth moulds	18 upper anterior moulds 6 lower anterior moulds
Posterior tooth moulds	3 maxillary sets "Typ" 3 mandibular sets "Typ" 3 maxillary sets "Lingual" 3 mandibular sets "Lingual"
Tooth shades	16 A-D and 4 Bleach shades
Material	NHC composite

High-performance material for long-lasting durability

The physical properties of the high-performance NHC composite have been improved to maximize its wear resistance, shear bond strength and compressive strength to ensure successful long-term use. The material offers an inherent strength and tolerance that can withstand even extreme stresses.



[1] M. Rosentritt, In-vitro Verschleissuntersuchungen «Pin on block», Study Report, Universitätsklinikum Regensburg, 2012.
 [2] K. Hagenbuch, Entwicklungsbericht Frontzahn, Ortholingual und Orthotyp, Test Report, Ivoclar Vivadent, 2011.

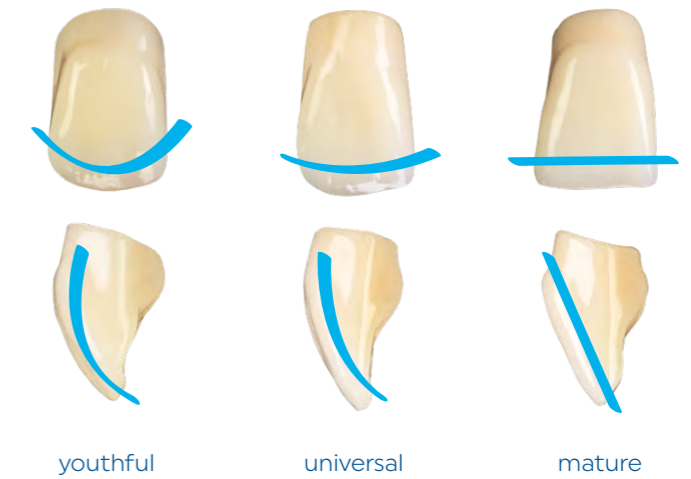
Anterior tooth SR Phonares II

The esthetic Phonares II tooth moulds are designed for maximum natural beauty and vitality in the anterior region.

Tooth shape:



Age-related characteristics:



- ✓ The moulds are based on a design concept that combines the basic tooth shapes with age-specific characteristics.
- ✓ The option to choose between soft and bold shapes allows the esthetic result to be better matched to the individual features of the patient.
- ✓ Varied age-specific characteristics impart a maximum level of natural beauty in line with the patient's age.
- ✓ Given that the moulds are available in sizes Small, Medium and Large, patients can expect an esthetically pleasing result.

18
upper moulds



Posterior teeth SR Phonares II Typ and SR Phonares II Lingual

Wide range
of functional
variations

SR Phonares II Typ

- With an occlusal scheme that allows versatile applications in partial and complete dentures.
- SR Phonares II Typ teeth continue the 40-year success story of the Orthotyp moulds.

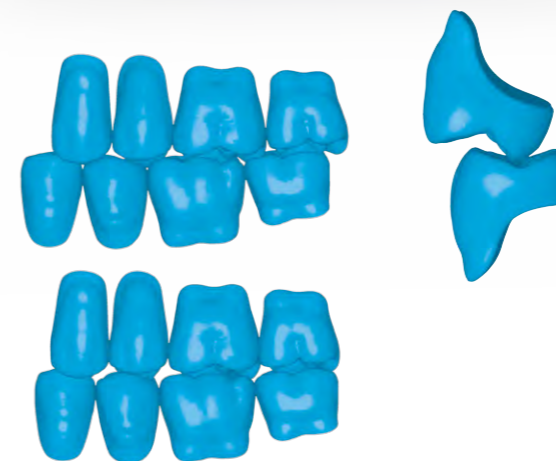
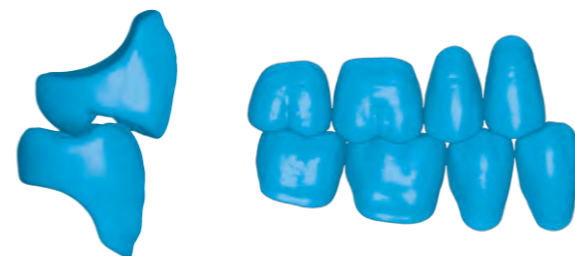


SR Phonares II Lingual

- Based on essential principles of lingualized occlusion.
- Generally centrally positioned contact points provide static stability, especially in implant-supported dentures.



- ✓ Classic occlusion
- ✓ Balanced contacts, with support in the fossa and on the buccal side
- ✓ Intercuspatation: For our classic tooth-to-two-tooth setup



- ✓ Lingualized occlusion
- ✓ Centralized contacts in the fossae
- ✓ Intercuspatation: For tooth-to-tooth and tooth-to-two-tooth setup techniques

Conventional removable dentures restoring individuality and functionality



Preliminary bite registration

Precision from the start with Centric Tray



Functional impression

Centricity to the point with Gnathometer M



Registration

Successful results in no time with the UTS 3D



Tooth set-up

Customized dentures with our prefabricated teeth



Try-in

Predictable results, verified on the patient



Finalization

Versatile denture base materials for pouring, packing and injection techniques



Protection

Effective preventive care with the Cervitec line of products