

# The solution for all cavities

## The Tetric® Line

Modern composites  
in tried-and-tested quality



# The solution for all cavities<sup>[1]</sup>

The Tetric® Line is comprised of four coordinated composites for direct restorative treatment. It combines tried-and-tested quality with modern technology.

Four composite materials are all you need for an efficient restorative workflow in all cavity classes<sup>[1]</sup>. The products are coordinated with each other and can be used in different combinations (consistency and shade). They are available in a kit.



Esthetics

### True-to-nature esthetics

Tetric® Prime and Tetric EvoFlow® allow you to create beautiful natural-looking restorations in anterior teeth. The 4-mm composites Tetric PowerFill and Tetric PowerFlow provide true-to-nature esthetics in the posterior region.



Quality

### 730 million restorations<sup>[2]</sup>

The Tetric line of products is based on Tetric EvoCeram, which has been successfully used in clinical practice for more than 15 years. It offers you tried-and-tested quality based on long-standing expertise. More than 730 million restorations have been placed with Tetric worldwide<sup>[2]</sup>.

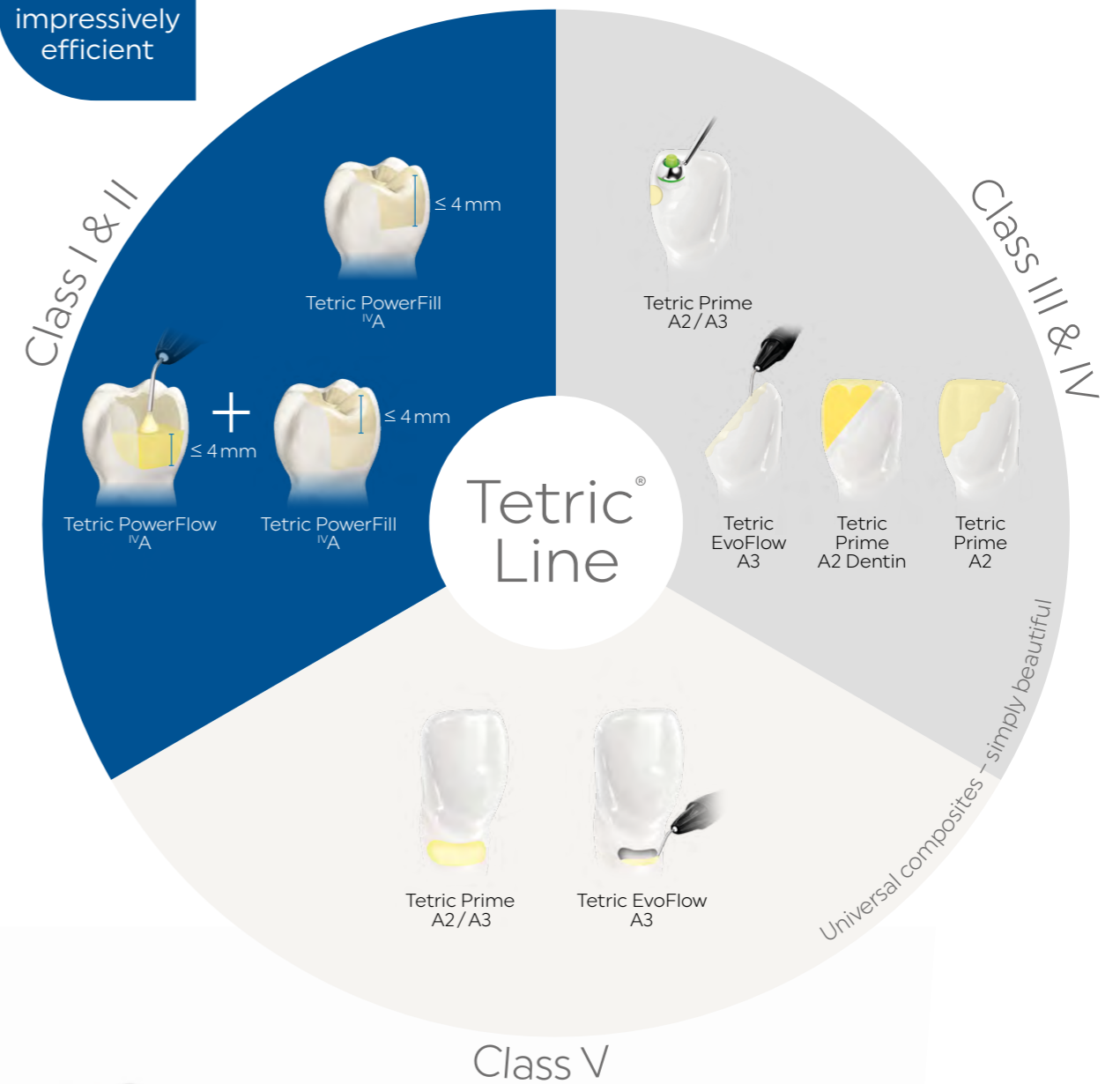


Efficiency

### Time savings of up to 51%

Each of the four composite resins offers product properties that support efficient treatment procedures. When used in combination with Adhese® Universal and Bluephase® PowerCure, the 4-mm composites allow for time savings of up to 51% in conjunction with light exposure times of 3 seconds<sup>[3]</sup>.

3s  
PowerCure –  
impressively  
efficient



[1] Cavity classes I–V according to G. V. Black  
 [2] Based on the worldwide sales figures for the Tetric family of products  
 [3] Only suitable for Class I & II restorations in posterior teeth light-cured from the occlusal aspect.



# Tetric Prime for excellent handling

Tetric Prime is a sculptable universal composite for the anterior and posterior region.

Because of the material's pronounced chameleon effect and excellent handling properties, it is particularly suitable for rebuilding lost tooth structure in the highly visible anterior region. In most cases, you will need to apply only one shade-matched material to achieve a lifelike esthetic result.

## How does natural shade blend work?

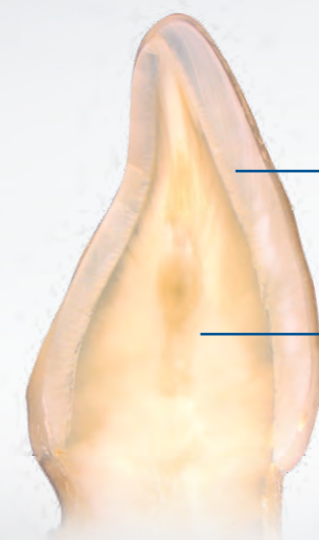
As a result of the special monomer and filler blend of our universal composites, the materials are capable of adapting their light-optical properties to those of the surrounding tooth structure.

Have a look! [ivoclar.com/chameleon-effect](https://www.ivoclar.com/chameleon-effect)

Excellent handling

## Esthetics – Quality – Efficiency

- ✓ Natural shade blend due to the pronounced chameleon effect
- ✓ Universally applicable enamel shades for small defects and direct veneers
- ✓ Dentin shades showing low translucency for restoring large defects and fulfilling high esthetic expectations
- ✓ Low susceptibility to fracture due to high flexural strength<sup>[4]</sup>
- ✓ Easy to contour as a result of low stickiness, good spreadability and creamy consistency
- ✓ Efficient polishability for a lustrous surface
- ✓ Easy to distinguish on X-rays due to high radiopacity



Universal enamel shade showing an enamel-like translucency of 11.5%

Optional dentin shades featuring a dentin-like translucency of 7% for large defects

Source: R&D Ivoclar Vivadent, Liechtenstein

[4] According to ISO 4049



# Tetric EvoFlow for precise application

Tetric EvoFlow is a flowable universal composite for the anterior and posterior region.

Tetric EvoFlow, like Tetric Prime, is characterized by its pronounced chameleon effect and excellent handling properties. Tetric EvoFlow can be applied precisely and is therefore suitable for creating minimally invasive anterior restorations and for use as a liner.

## Anterior restoration

placed with Tetric EvoFlow A2 Dentin and Tetric Prime A2



Preoperative situation: Inadequate mesio-palatal composite restoration in tooth 12

Final situation

Source: Dr Carola Pentelescu, Ivoclar Vivadent, Liechtenstein

## Esthetics – Quality – Efficiency

- ✓ Natural shade blend due to the pronounced chameleon effect
- ✓ Universally applicable enamel shades for small defects and cervical restorations
- ✓ Dentin shades featuring low translucency for concealing stains and for fulfilling demanding esthetic expectations
- ✓ Low susceptibility to fracture due to high flexural strength <sup>[5]</sup>
- ✓ Can be used as a liner in combination with Tetric Prime
- ✓ Easy to distinguish on X-rays due to high radiopacity
- ✓ Efficient and easily polishable

[5] According to ISO 4049

### Tetric EvoFlow has a thixotropic consistency

It is flowable under pressure, yet it remains stable when handled. Therefore, it enables you to work with high precision. This characteristic allows the product to adapt closely in narrow and thinly tapering areas. The product remains in place where it has been applied.

Have a look!  
[ivoclar.com/thixotropy](https://ivoclar.com/thixotropy)





# Tetric PowerFlow for fast volume replacement

Tetric PowerFlow is a flowable 4-mm composite for true-to-nature esthetic results in the posterior region.

Tetric PowerFlow, which is characterized by low shrinkage, optimum flexural strength<sup>[6]</sup> and reliable depth of cure, shows impressive clinical performance. As a result of its great adaptation to cavity walls, the product is suitable for the efficient treatment of deep cavities. We recommend using Tetric PowerFlow in combination with Tetric PowerFill. It can also be used together with Tetric Prime.

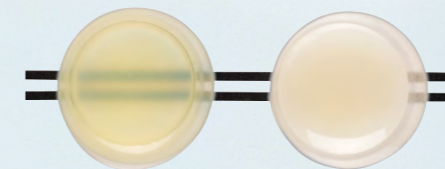
## Esthetics – Quality – Efficiency

- ✓ True-to-nature esthetics for posterior restorations due to Ivocerin<sup>[7,8]</sup> and Aessencio Technology
- ✓ Reliable curing of increments of up to 4 mm in thickness
- ✓ Low susceptibility to process-related air entrapment
- ✓ Great adaptation to cavity walls and easy handling because of outstanding flow properties
- ✓ Effective combination with Tetric PowerFill and Tetric Prime
- ✓ Easy to distinguish on X-rays due to high radiopacity

### Patented light initiator Ivocerin<sup>[7,8]</sup> and Aessencio Technology

Ivocerin ensures a reliable depth of cure of composite layers of up to 4 mm. The Aessencio Technology is responsible for gradually increasing the opacity of the initially translucent 4-mm composites during the light polymerization process. Ultimately, the materials attain the translucency levels of enamel and dentin and therefore assume a true-to-nature esthetic appearance.

Have a look! [ivoclar.com/aessencio-technology](http://ivoclar.com/aessencio-technology)



Tetric PowerFlow before and after polymerization

Short  
light exposure  
times from  
3 seconds



[6] According to ISO 4049

[7] Ganster B et al., New photocurable structures, 4. Acylgermane-based photoinitiator for visible light-curing, Macromolecular Rapid Commun. 2008, 29, 57-62.

[8] Ganster B et al., New photocurable structures, Diacylgerman-based photoinitiator for visible lightcuring, Macromolecules 2008, 41, 2394-2400



# Tetric PowerFill for easy contouring

Tetric PowerFill is a sculptable 4-mm composite for true-to-nature esthetic results in the posterior region.

Similar to Tetric PowerFlow, Tetric PowerFill is characterized by reliable depth of cure, low shrinkage and optimum flexural strength<sup>[9]</sup>. In short: The clinical performance of Tetric PowerFill is just as impressive and the results are just as esthetic<sup>[10]</sup> as those achieved with conventional composites. The low stickiness of Tetric PowerFill facilitates the creation of anatomical structures.

## Esthetics – Quality – Efficiency

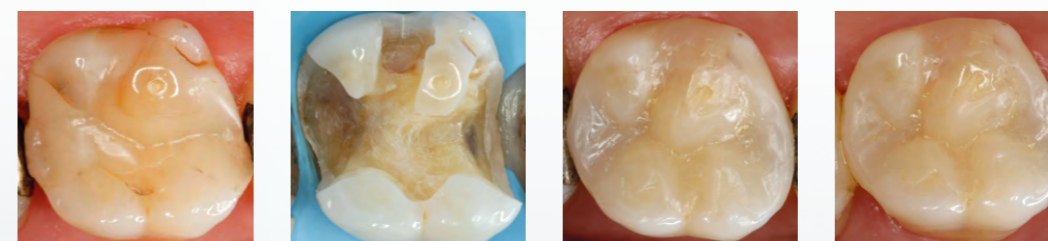
- ✓ True-to-nature esthetics for posterior restorations due to Ivocerin<sup>[11,12]</sup> and Aessencio Technology
- ✓ Excellent margin quality in combination with Adhese Universal
- ✓ Reliable depth of cure of increments of up to 4 mm in thickness
- ✓ Low susceptibility to process-related air entrapments<sup>[13]</sup>
- ✓ Easy creation of anatomical structures because of low stickiness
- ✓ Easy to distinguish on X-rays due to high radiopacity
- ✓ Effective combination with Tetric PowerFlow

[9] According to ISO 4049  
[10] In the posterior region

[11] Ganster B et al., New photocleavable structures, 4. Acylgermane-based photoinitiator for visible lightcuring, *Macromolecular Rapid Commun.* 2008, 29, 57-62.

[12] Ganster B et al., New photocleavable structures, Diacylgerman-based photo-initiator for visible lightcuring, *Macromolecules* 2008, 41, 2394-2400.

[13] Hirata R, Effect of sonic resin composite delivery on void formation assessed by micro-computed tomography, *Operative Dentistry* 2018, 43-2, 144-150, additional data on file.



Preoperative situation

Prepared cavity

Baseline

6-month recall appointment  
Source: Dr Lukas Enggist,  
Ivoclar Vivadent, Liechtenstein

## Posterior tooth restoration made with Tetric PowerFlow and Tetric PowerFill

The images speak for themselves. Even when they are applied in layers of up to 4 mm, Tetric PowerFlow and Tetric PowerFill are capable of achieving highly esthetic results in posterior teeth.



Short  
light exposure  
times from  
3 seconds



# Time savings of up to 51% for you and your patients

Tetric PowerFill and Tetric PowerFlow will increase the efficiency of your workflow.

## Fewer treatment steps due to 4-mm increments

Compared with conventional filling techniques, you can restore cavities of up to 4 mm in depth with just one increment. In cavities with a depth of more than 4 mm you can apply increments of up to 4 mm in thickness. Fewer increments means having to switch less between the composite, the modelling instrument and the light-curing device.



## Light exposure times from 3 seconds

Products	Light intensity (mW/cm <sup>2</sup> )	Exposure time	
All composites of the Tetric Line	500-900	20 s	
All composites of the Tetric Line	1,000-1,300	10 s	e. g. Bluephase G4
All composites of the Tetric Line	1,800-2,200	5 s	e. g. Bluephase PowerCure
Tetric PowerFill and PowerFlow	2,700-3,300	3 s <sup>[14]</sup>	e. g. Bluephase PowerCure

[14] Only suitable for Class I & II restorations in posterior teeth light-cured from the occlusal aspect.

## 3s PowerCure products for saving time

Reduce your treatment time in the posterior region by up to 51% with our 3s PowerCure products. Light-cure Adhese Universal, Tetric PowerFill and Tetric PowerFlow in just 3 seconds using the 3sCure mode<sup>[14]</sup>. Shorter light exposure times mean more time for yourself and less stress and discomfort for your patients.

Learn more about this topic by consulting our Scientific Documentation:  
[ivoclar.com/3s-powercure/scientific-doc](https://ivoclar.com/3s-powercure/scientific-doc)



# Do you know our clinical accessories?

## Delivery forms

Tetric Line – The solution for all cavities [15]	
<b>Tetric Line Kit Syringe</b>	1x Tetric PowerFill <sup>IV</sup> A, 1x Tetric PowerFlow <sup>IV</sup> A, 1x Tetric Prime A2, 1x Tetric Prime A3, 1x Tetric Prime A2 Dentin, 1x Tetric EvoFlow A3, 1x Adhese Universal VivaPen
<b>Tetric Line Kit mixed</b>	10x Tetric PowerFill <sup>IV</sup> A, 1x 2-g syringe Tetric PowerFlow <sup>IV</sup> A, 10x Tetric Prime A2, 10x Tetric Prime A3, 5x Tetric Prime A2 Dentin, 1x 2-g syringe Tetric EvoFlow A3, 1x Adhese Universal VivaPen
Kits for enhanced efficiency in the posterior region	
<b>Bluephase PowerCure and Kit syringe</b>	<b>1x Bluephase PowerCure 100–240V incl. Tetric PowerFill Kit:</b> 1x 3-g syringe Tetric PowerFill <sup>IV</sup> A, 1x 2-g syringe Tetric PowerFlow <sup>IV</sup> A, 1x 2 ml Adhese Universal VivaPen
<b>Bluephase PowerCure and Kit mixed</b>	<b>1x Bluephase PowerCure 100–240V incl. Tetric PowerFill Kit:</b> 20x 0.2 g Tetric PowerFill <sup>IV</sup> A, 1x 2-g syringe Tetric PowerFlow <sup>IV</sup> A, 1x 2 ml Adhese Universal VivaPen
<b>Tetric PowerFill Kit syringe</b>	1x 3-g syringe Tetric PowerFill <sup>IV</sup> A, 1x 2-g syringe Tetric PowerFlow <sup>IV</sup> A, 1x 2 ml Adhese Universal VivaPen
<b>Tetric PowerFill Kit mixed</b>	20x 0.2-g syringes Tetric PowerFill <sup>IV</sup> A, 1x 2-g syringe Tetric PowerFlow <sup>IV</sup> A, 1x 2 ml Adhese Universal VivaPen

Information about additional delivery forms is available here: [ivoclar.com/tetric-line/delivery-forms](http://ivoclar.com/tetric-line/delivery-forms)



Learn more about our Tetric Line:  
[ivoclar.com/tetric-line](http://ivoclar.com/tetric-line)

Our clinical accessories also allow you to perform efficient treatment procedures – from relative isolation and time-saving contouring to high-gloss polishing in just one step.

### OptraGate

Our latex-free lip and cheek retractor for easy moisture control  
[www.ivoclar.com/optragate](http://www.ivoclar.com/optragate)



### OptraSculpt

Efficient contouring due to non-stick properties  
[www.ivoclar.com/optrasculpt](http://www.ivoclar.com/optrasculpt)



### OptraGloss

High-gloss polishing of composites in just one step with OptraGloss  
[www.ivoclar.com/optragloss](http://www.ivoclar.com/optragloss)

[15] Cavity classes I–V according to G. V. Black



# Direct restoratives for efficient esthetics

Our well-coordinated products for direct restorative procedures enable you to efficiently create high-quality, esthetic restorations.



## Isolate

Comfortable isolation with OptraGate and OptraDam



## Bond

Efficient bonding with the Adhese Universal VivaPen



## Restore

Tetric Line – the solution for all cavities



## Contour

Easy adaptation of materials with OptraSculpt



## Cure

High curing performance delivered by Bluephase polymerization lights



## Polish

Lustrous surfaces produced with OptraGloss



## Protect

Effective prevention with Fluor Protector S