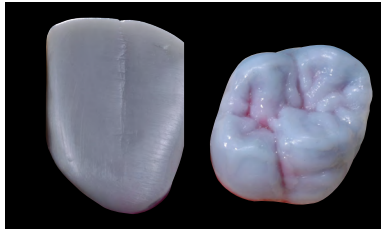


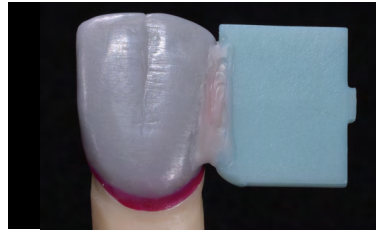
IPS e.max[®] Press Multi

Process Overview

Wax-up, attaching/
waxing to the ring base



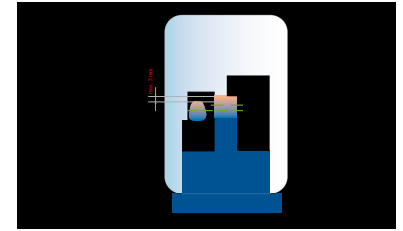
Full-contour wax-up



Attach the restoration to the IPS Multi Wax Pattern with wax

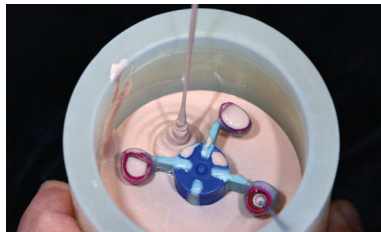


Restorations waxed to the IPS Multi investment ring base



Optional: Increase of the incisal portion

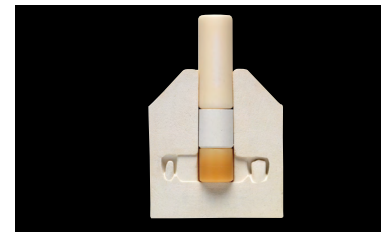
Investing, pressing



Investing



IPS e.max Press Multi,
IPS Multi One-Way Plunger



Patented "horizontal pressing" procedure



Pressing in e.g. the Programat[®] EP 5010
using a special program

Divesting, glaze firing,
done



IPS e.max Press Multi after having been
divested



Stains/Glaze firing in combination with
IPS e.max Ceram



Shade matching with the A-D shade guide

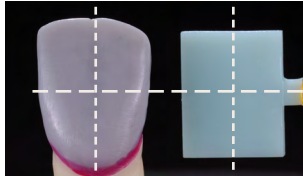


Completed IPS e.max Press Multi
restoration

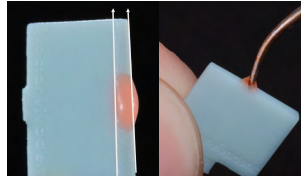
IPS e.max® Press Multi

Attaching/waxing rules

General rules for attaching the IPS Multi Wax Pattern



Position the wax up so that its centre is aligned with that of the IPS Multi Wax Pattern.



Place IPS Multi Wax Pattern with its narrower, tapered side pointing in an occlusal/incisal direction.

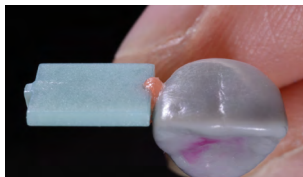


The IPS Multi Wax Pattern should be aligned with the vestibular wall.



Close the gap between the wax-up and the Wax Pattern with a small amount of wax. Avoid the formation of an overly thick joining area.

Attaching/waxing to anterior restorations

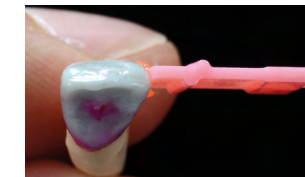


Position **IPS Multi Wax Pattern Form A**, in such a way that it "extends" the labial surface of the wax-up.



Close the gap with a small amount of wax. Avoid the formation of an overly thick joining area. Round the basal edge of the Wax Pattern, if required.

Attaching/Waxing to anterior restorations with a delicate stump



Position **IPS Multi Wax Pattern Form B**, in such a way that it "extends" the labial surface of the wax-up.



Close the gap with a small amount of wax. Avoid the formation of an overly thick joining area.

Attaching/waxing to veneer restorations



Position **IPS Multi Wax Pattern Form A**, in such a way that it "extends" the labial surface of the wax-up. Observe the preparation margin.

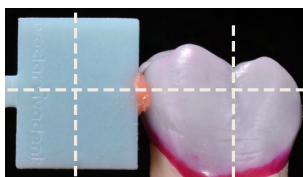


Close the gap with a small amount of wax. Avoid the formation of an overly thick joining area. Round the basal edge of the Wax Pattern, if required.



Do not attach the Wax Pattern to the labial surface of the veneer.

Attaching/Waxing to posterior restorations



Attach the **IPS Multi Wax Pattern Form A**, to the wax-up in a central vertical position and with the tapered side towards the occlusal.



To ensure a natural shade progression on the buccal surface, position the IPS Multi Wax Pattern Form A, mesio-buccally.



Close the gap with a small amount of wax. Avoid the formation of an overly thick joining area. Round the basal edge of the Wax Pattern, if required.



CE 0123



Manufacturer
Ivoclar Vivadent AG
Bendererstrasse 2
9494 Schaan/Liechtenstein
www.ivoclar.com